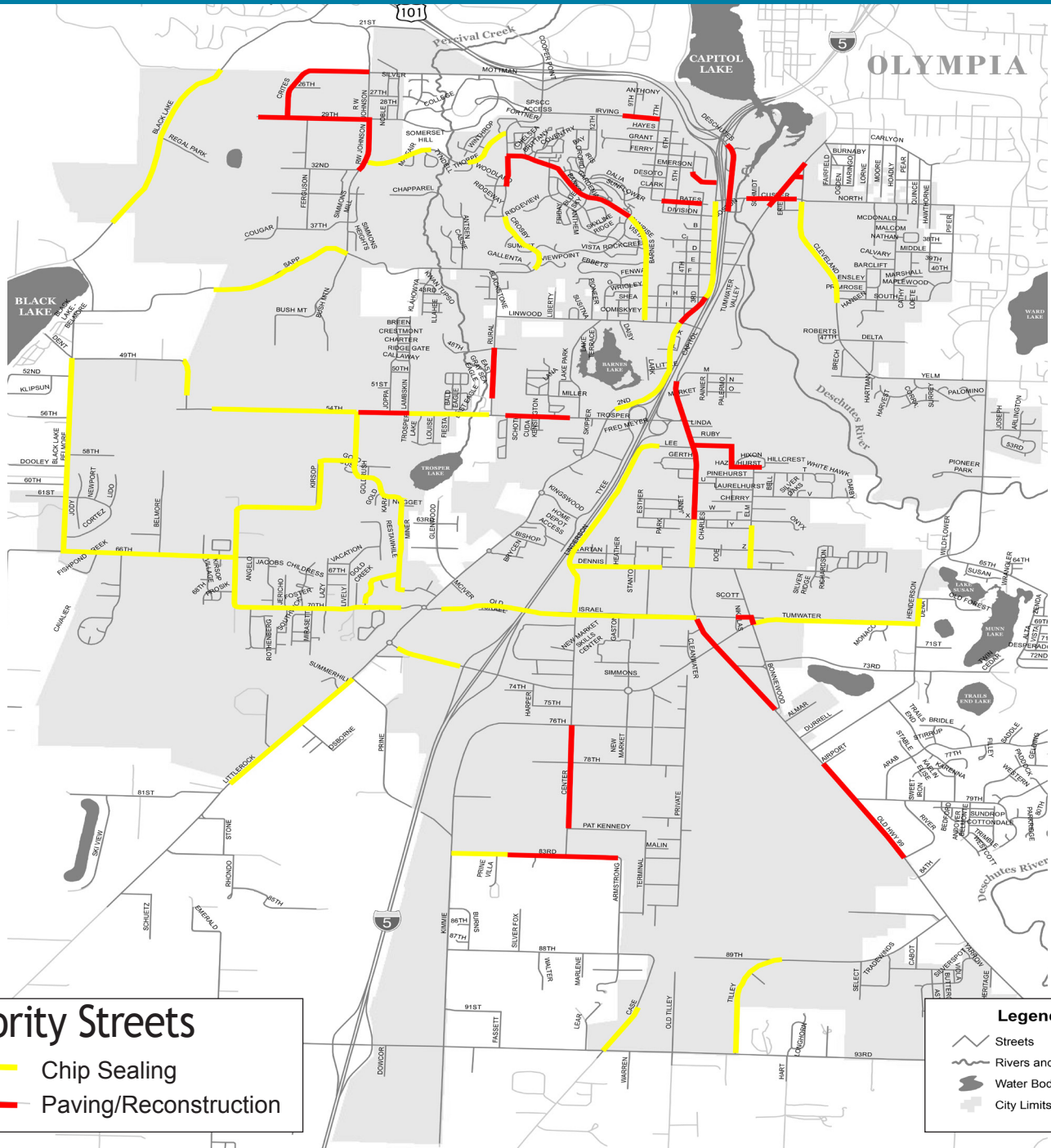


Tumwater Street Maintenance Priorities



Priority streets for Chip Sealing include portions of:

Kirsop Road SW
 Black Lake Belmore Road
 66th Avenue SW
 S 2nd Avenue SW
 Black Lake Blvd SW
 Cleveland Ave SE
 Israel Road SW
 Littlerock Road SW
 Linderson Way

Priority streets for Paving include portions of:

Custer Way SW
 Capitol Boulevard SE
 RW Johnson Blvd SW
 Trospen Road/54th Avenue
 Old Highway 99
 Deschutes Way SW
 Crites Street SW
 29th Avenue SW



Contact:

Jay Eaton, Public Works Director

City of Tumwater
 555 Israel Road SW
 Tumwater, WA 98501
 (360) 754-4140

www.ci.tumwater.wa.us

About Street Maintenance

Roadway Treatment Costs per mile (average 32' width of street)

Preventative Maintenance - Chip Seals, \$6/square yard, 1 mile = \$115,000

Overlay, \$35/square yard, 1 mile = \$660,000

Reconstruction, \$100/square yard, 1 mile = \$2,000,000

Street Maintenance and Reconstruction

With proper maintenance, life expectancy of a new road is 30 years. It is less expensive to maintain streets with lower-cost, preventative treatments than to wait until the street condition deteriorates to the point that major rehabilitation or reconstruction is required. In general, the longer maintenance is delayed, the more expensive the repair.

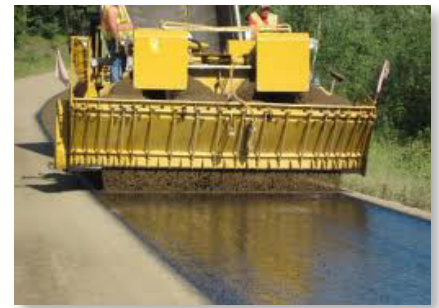
Crack Sealing is the filling of moderately-sized cracks with hot liquid rubberized asphalt. The cost of crack sealing is approximately **\$1 per square yard**. It is the lowest cost of all treatments and is used to extend pavement life at the earliest possible time. It seals out moisture and chemicals and can be applied to any street, new or old.

Chip Sealing (or seal coating) is the application of a special protective wearing surface to an existing pavement. The cost of chip sealing is roughly **\$6 per square yard**. In this method, gravel chips and liquid asphalt are spread on the existing pavement and rolled in place to seal the road surface. This is a low-cost preventative maintenance method that extends pavement life, seals and re-establishes surface traction. These are generally performed on a 7-8 year cycle on well-traveled roads.

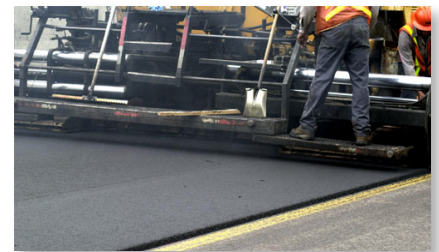
Pothole Repairs and **Asphalt Patches**. When a small isolated section of a street fails, it forms a "pothole." Potholes typically form when water has seeped under the pavement surface, creating pockets of water that fracture the surface when traffic passes over the road. Individual potholes are temporarily repaired by filling them with a cold-mix asphalt. If a section of roadway has repeated and numerous potholes, it is a sign that the sub-base under the road surface has failed and the road needs to be reconstructed. When a street is generally in good condition but there are isolated sections that show signs of failure, asphalt patching is performed to improve the overall condition of the street. This process is similar to asphalt overlay (above), but on a smaller scale. Failed sections are saw cut, removed, and repaved. Cost varies depending on the extent of patching and repairs needed.

Asphalt Overlay costs approximately **\$35 per square yard**. If large areas of a roadway are showing signs of structural failure such as potholes or alligator cracking, these areas are ground down to the good pavement base. This is followed by a new hot-mix asphalt pavement layer (overlay) using a paving machine, extending the life cycle of the original pavement. Asphalt overlays are generally performed on a 15 to 20-year cycle.

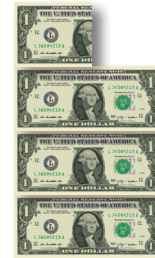
Reconstruction of a street costs roughly **\$100 per square yard**. When a roadway has reached the end of its life cycle and can no longer be rehabilitated using the above methods, a new road must be constructed. First, all existing pavement is removed. Then this pavement is ground up and mixed with the remaining road base soil, and re-graded and compacted in place. Lastly, new pavement, consisting of hot-mix asphalt, is applied with a paving machine. Reconstructing a street is the most expensive method, but necessary when paving and base material have failed.



Chip Sealing
\$6/square yard



Overlay
\$35/square yard



Reconstruction
\$100/square yard

