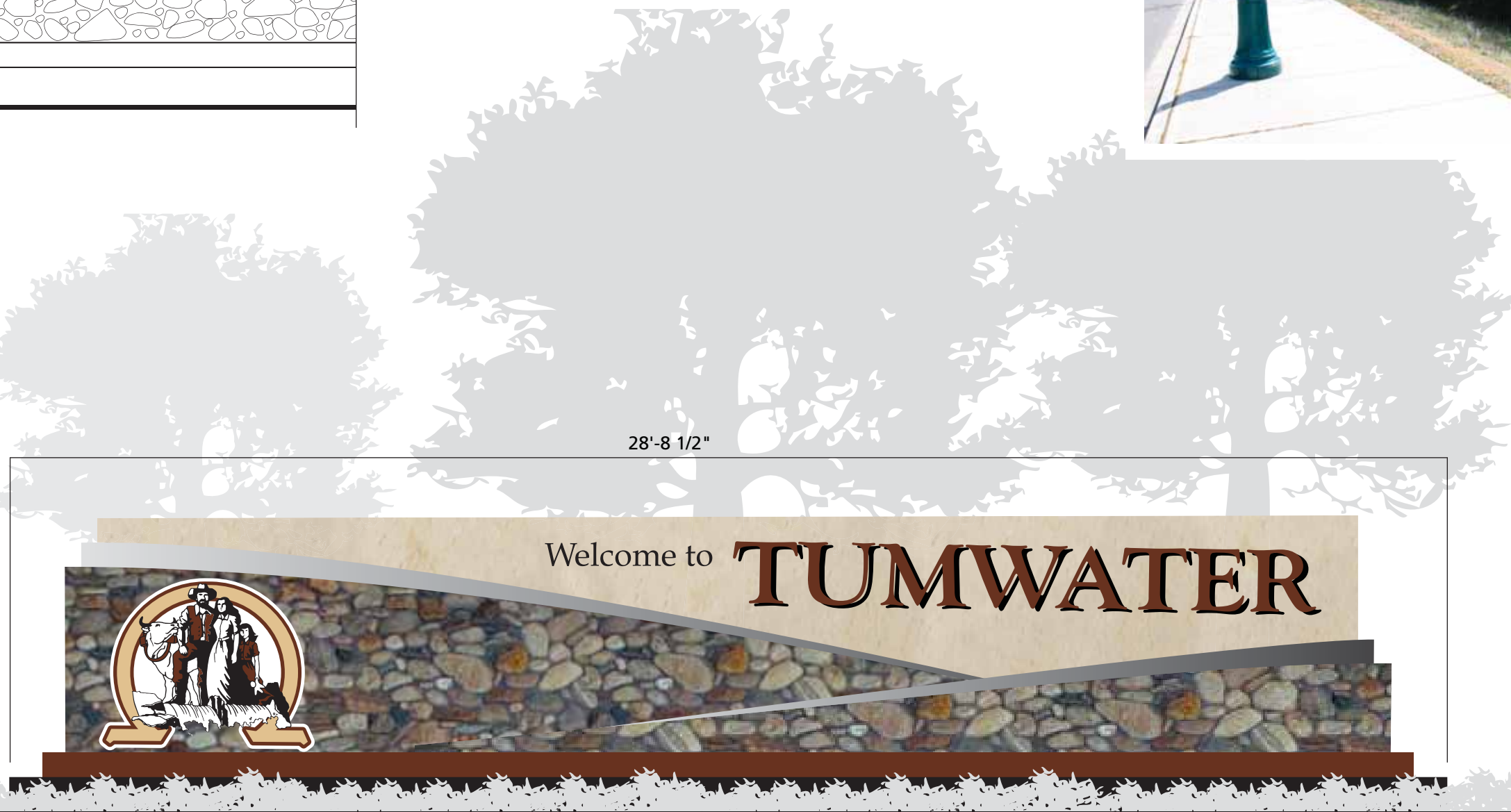
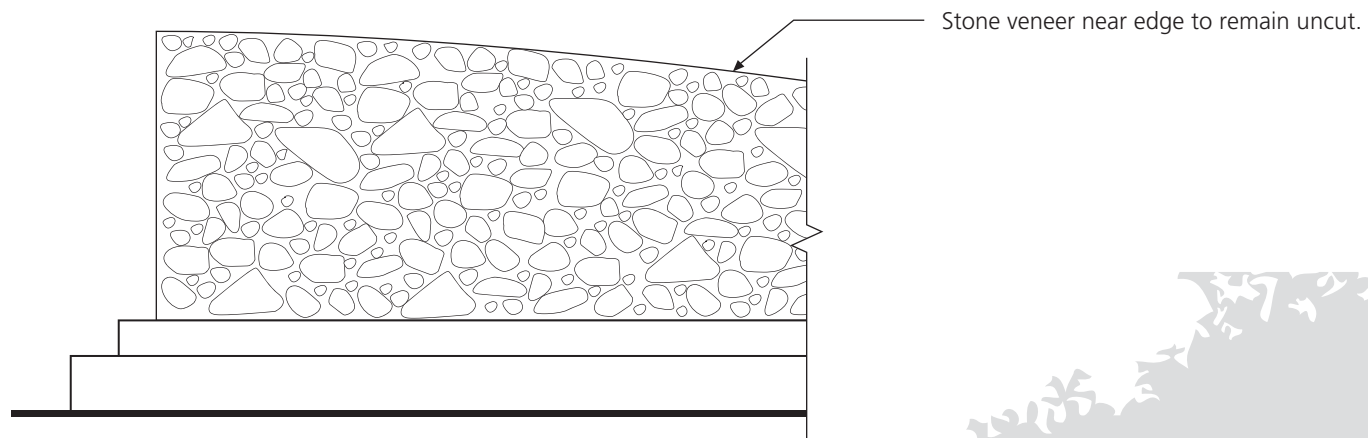


CITY OF TUMWATER

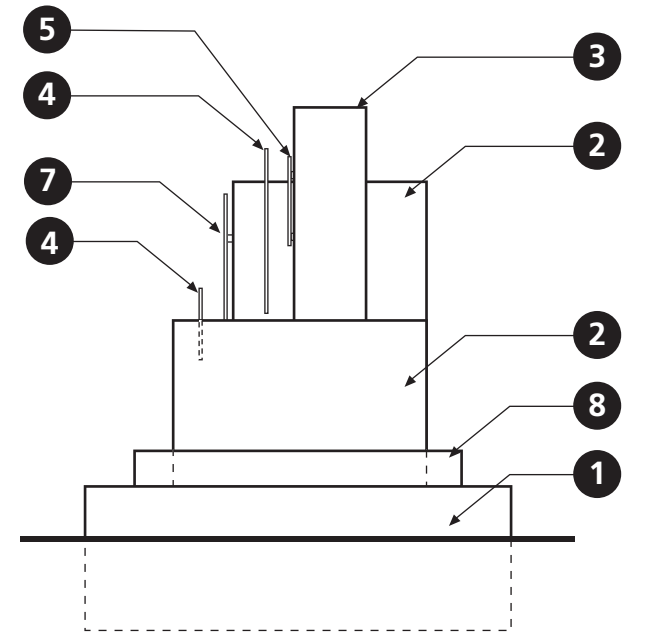
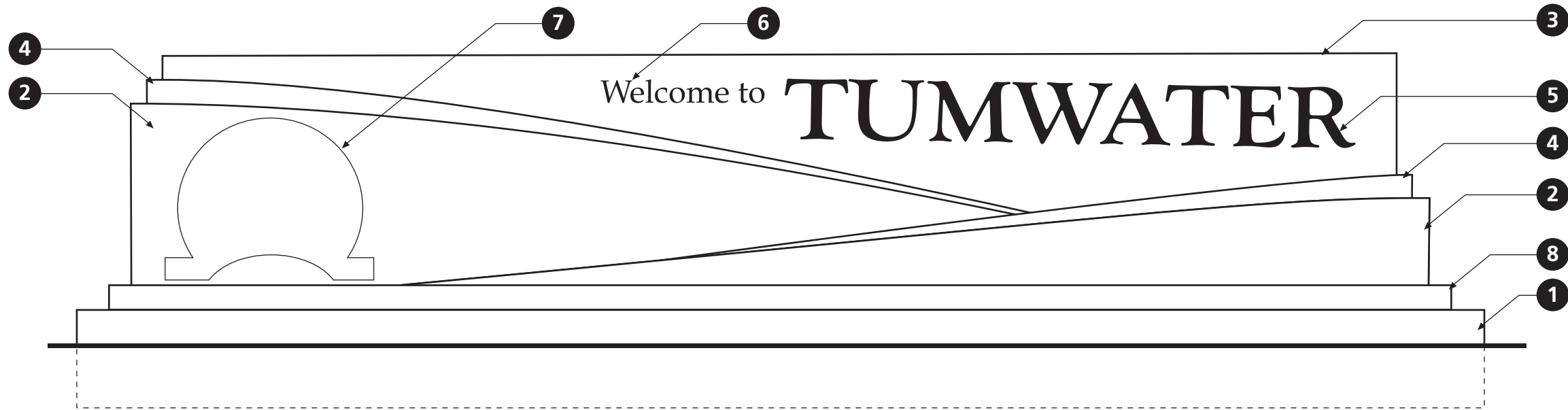
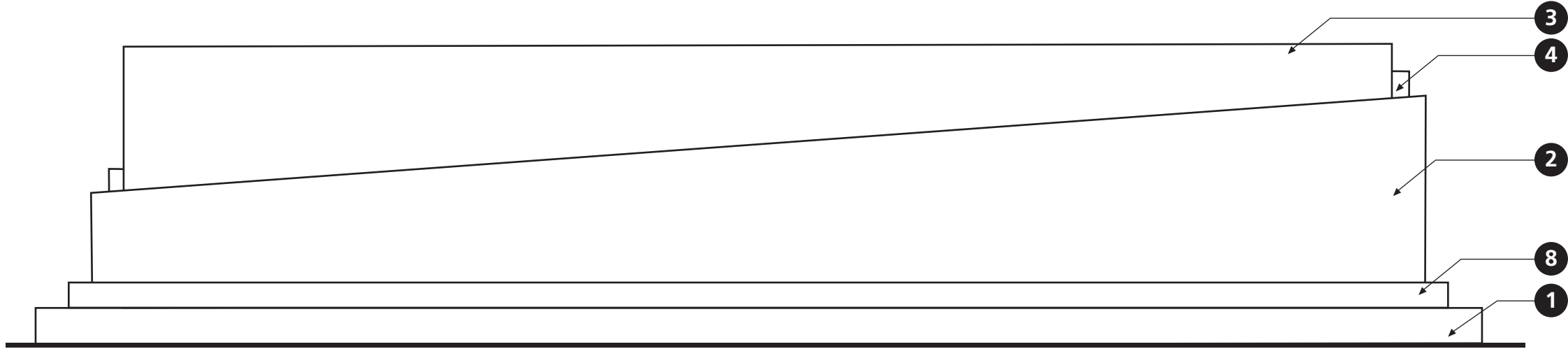
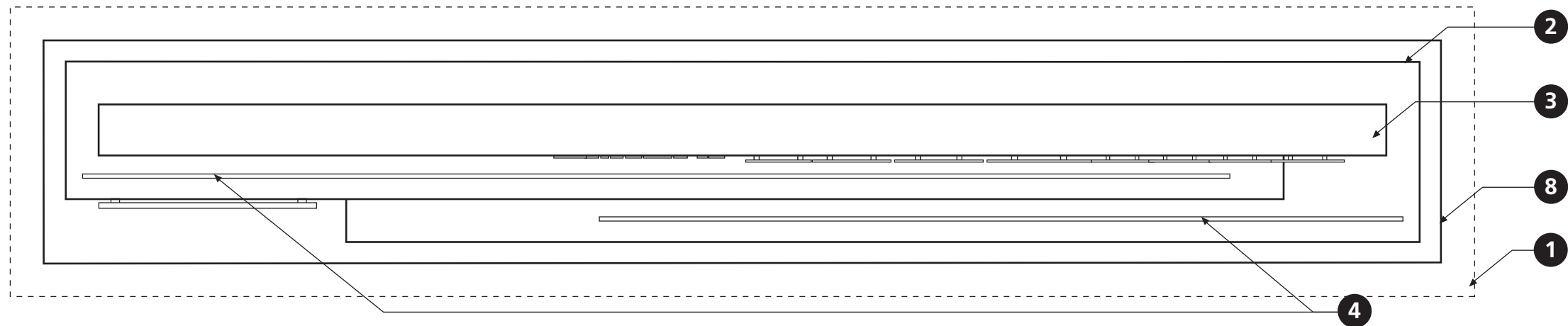
City Gateway Design

100% FINAL DRAFT
05.12.10

**APPROVED BY THE
CITY COUNCIL**
05.18.10



1 TYPICAL ELEVATION
3/8" = 1'-0"



NOTES:

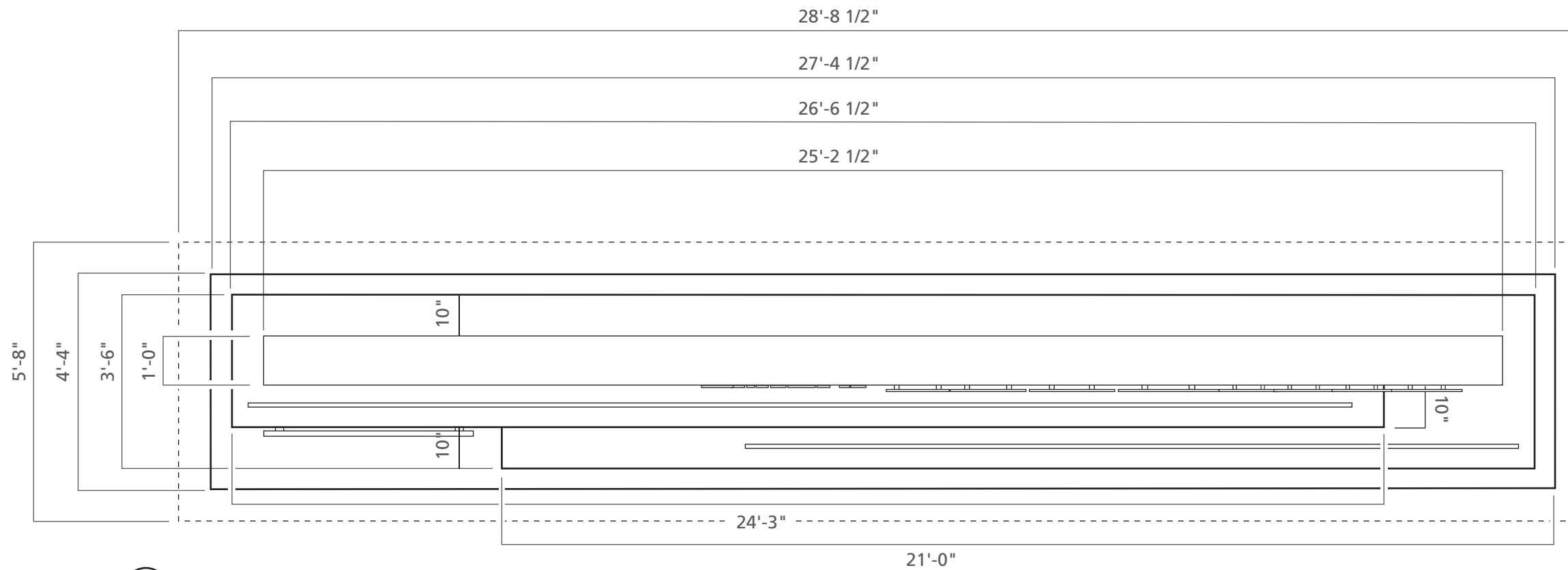
- 1 Concrete Foundation
- 2 Concrete w/ Stone Veneer
- 3 Concrete w/ Acid Stain
- 4 1/4" Stainless Steel Accent Fins.
- 5 Pin Mounted Aluminum Letters - 1'-2 1/2" Cap Height (optional halo-lit letters)
- 6 Wall Mounted Aluminum Letters - 5 1/2" Cap Height (optional halo-lit letters)
- 7 Pin Mounted Aluminum Sign Panel (Tumwater City Logo)
- 8 Aluminum Base of Sign

1 FRONT, BACK & TOP ELEVATIONS

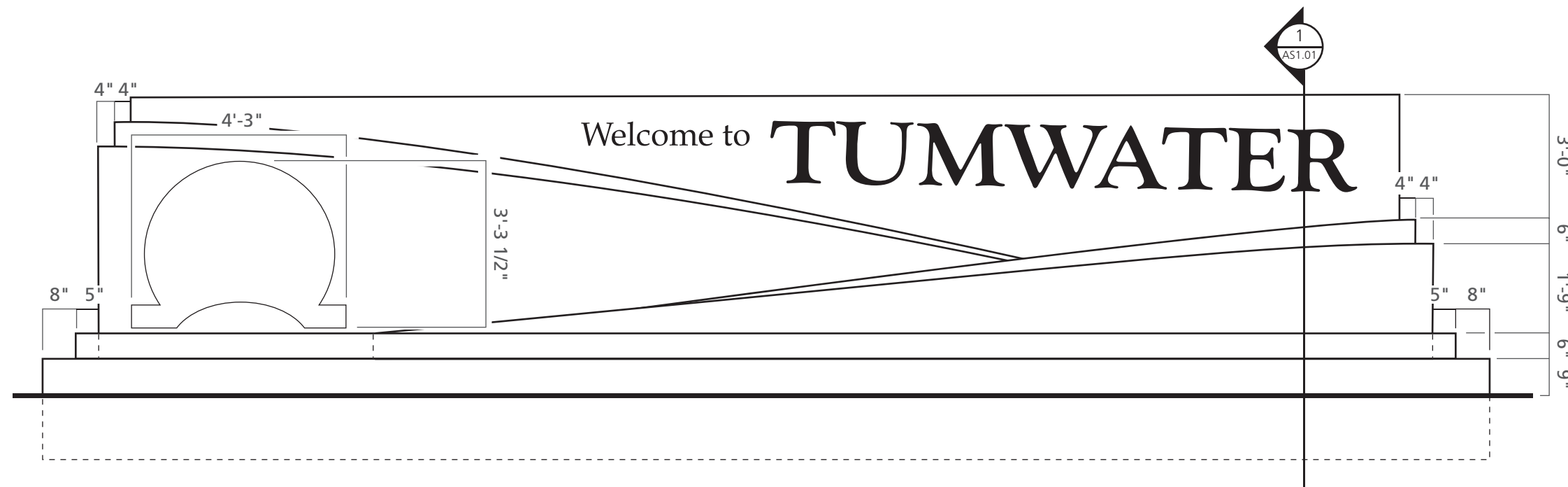
3/8" = 1'-0"

2 SIDE ELEVATION

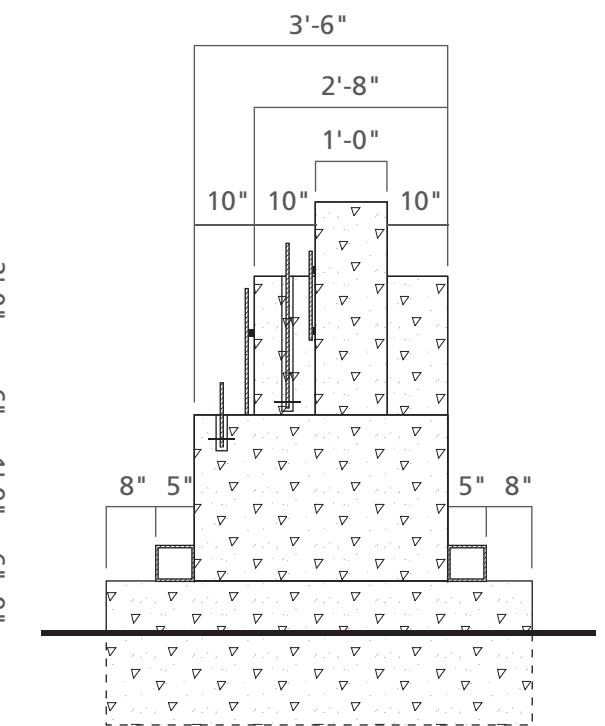
3/8" = 1'-0"










2 PLAN VIEW
3/16" = 1'-0"



1 FRONT ELEVATION
3/16" = 1'-0"



3 SIDE ELEVATION
3/8" = 1'-0"

MATERIALS	DESCRIPTION	SPECIAL NOTES
1	 <p>Concrete Foundation</p>	
2	 <p>Concrete monument sign base w/ Eldorado Stone (or similar) American Blend Creek Cobble & River Rock</p>	
3	 <p>Concrete monument sign base colored w/ Lithochrome (or similar) Chemstain Classic color CS-15 Antique Amber.</p>	
4	 <p>1/4" Stainless Steel accent fins. Made in pieces joined with ship lap or dove tail joints.</p>	
5	 <p>1/4" Pin Mounted Aluminum letters painted to match PMS 477. Cap Height: 1'-2 1/2" <i>(Optional halo-lit letters)</i></p>	
6	 <p>1/4" Wall Mounted Aluminum letters painted Black. Cap Height: 5 1/2" <i>(Optional halo-lit letters)</i></p>	
7	<p>1/4" pin mounted Aluminum sign panel with digital print of Tumwater logo.</p>	
8	 <p>Aluminum base painted to match PMS 477</p>	

SPECIAL NOTES

Colors must match between all phases of implementation. Colors must look exactly the same every time they are used.

UV resistant materials should be used for all possible applications.

Cover all vinyl graphic areas with 3M graffiti film.

Use manufacturer recommended clear coat protectant for all painted surfaces.



Blue Oat Grass



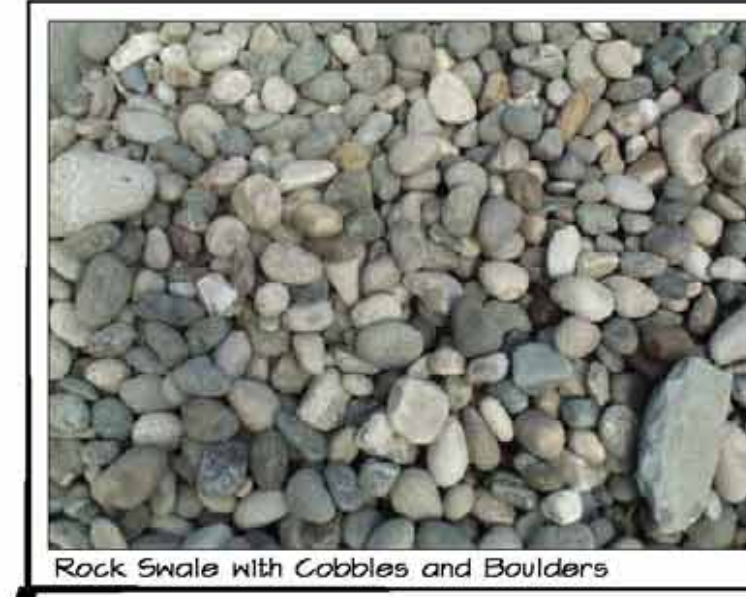
Point Reyes Geonothus



Blue Pacific Shore Juniper



Blue Creeping Phlox



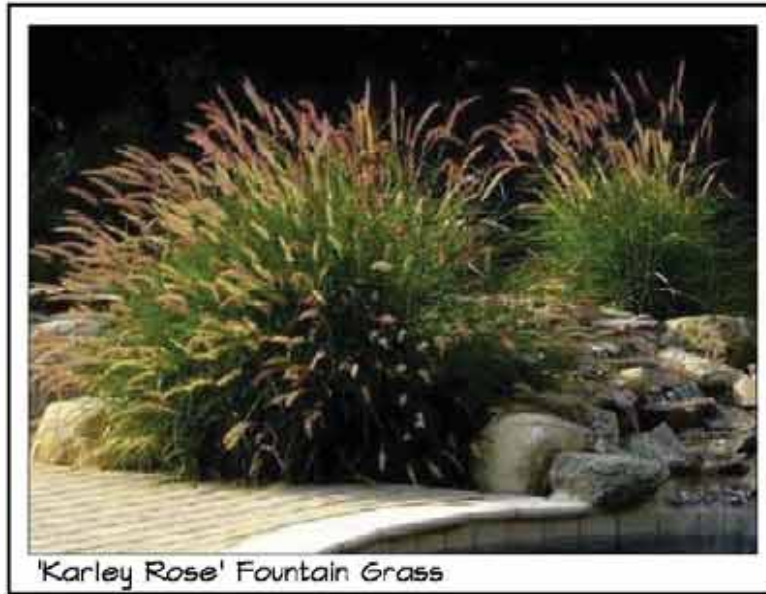
Rock Swale with Cobbles and Boulders



'Will Alderman' Rose



Gro-Low Fragrant Sumac



'Karley Rose' Fountain Grass



Sword Fern



'Goldtau' Tufted Hair Grass



Vine Maple



Serviceberry



Douglas Fir



Western Rhododendron



Western Hemlock



Hinoki False Cypress

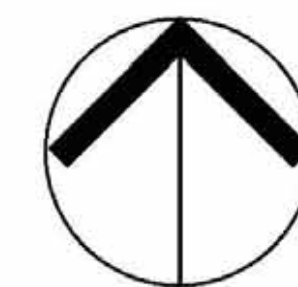


TUMWATER GATEWAY MONUMENT SIGN

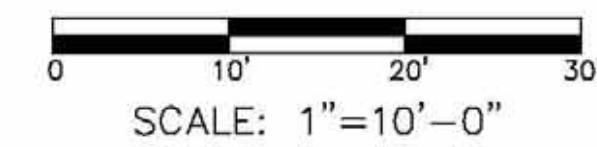
PRELIMINARY LANDSCAPE PLAN
10 May 2010

JEFFREY B. GLANDER & ASSOCIATES, PLLC
Landscape Architecture Site Planning

1821 41st Avenue East
Olympia, WA 98506
(360) 337-6922



NORTH



SCALE: 1"=10'-0"



STATE OF WASHINGTON
REGISTERED
LANDSCAPE ARCHITECT
Jeffrey B. Glander
Certificate No. 405