

How To Find And Read Your Water Meter

Meter Location (In The Ground)



Important Note: Water shut off at the meter should only be done by City of Tumwater Utility Operations staff. Do not turn the water off at the meter.

**If you need a water shut off, call (360)-754-4150
24 hours a day, 7-days a week.**

Getting At The Meter

Most homes after 2015 have a separate private shut off valve located next to the home (usually around the foundation) outside of the meter that can be shut off by others, including plumbers.

The meter is generally located on your property near the street. In older homes, it may be closer to your foundation.


A cover is on the meter box. If it has not been accessed in awhile, it may be covered by dirt, debris, or landscaping.

To open the cover, use your hands and a screwdriver or a similar tool. Place the screwdriver in the hole and pry up. It may be snug and require a little effort. Just be careful.

If you see nothing but dirt inside, gently dig around using your hands or a trowel, being careful not to damage the meter. You shouldn't have to dig down more than a foot, usually much less.



Reading The Meter

Open the meter cover. Shine a bright light such as a flashlight or cell phone light on the face of the meter. Some meters have an icon  or solar panels.

When activated, the display will first show a test. Next there will be two readings that switch back and forth about every 8 seconds.

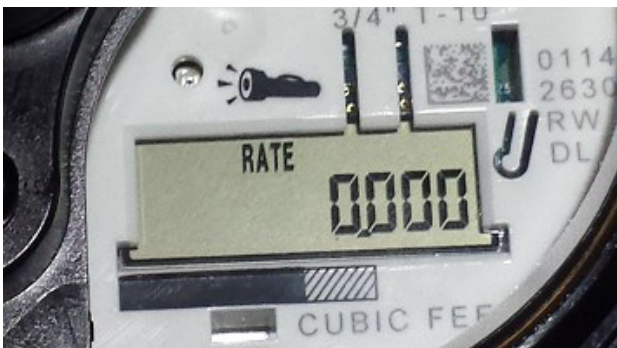
Reading or total consumption amount

This is the amount of water used since the meter was installed. It is measured in cubic-feet. As water continues to be used it will increase.



Flow Rate

This is the flow of water across the meter at the time of reading. It is measured in gallons per minute if (GPM) is listed on the bottom right of the display. If nothing is listed, the rate is in cubic-feet per minute.



What else can you learn from your meter?

Leak Indicator Icon

If you see a tiny water faucet icon on your meter, that means water has been flowing for an extended period of time for the past 24 hours. This strongly suggests you have a leak.

Compare your bill to the meter

Your bill is reported per 100 cubic feet (about 750 gallons) of water. To get the same reading from your meter, read the first four numerals from the left. For example 075306.372 would be read 753.

Flow and Leaks

If you don't have water running in the house, the flow rate should be zero. If there are zeroes a few times and then a number when reading the flow rate on the meter, it suggests a leak.

Have a leak and want to know what to do? We also have a leaflet called "Might Have A Leak? What Now?!"



You can call us with any questions!

City of Tumwater
Water Resources and Sustainability
Operations Department
360-754-4150

For billing questions, please
contact Utility Billing at
360-754-4133

utilitybilling@ci.tumwater.wa.us

