

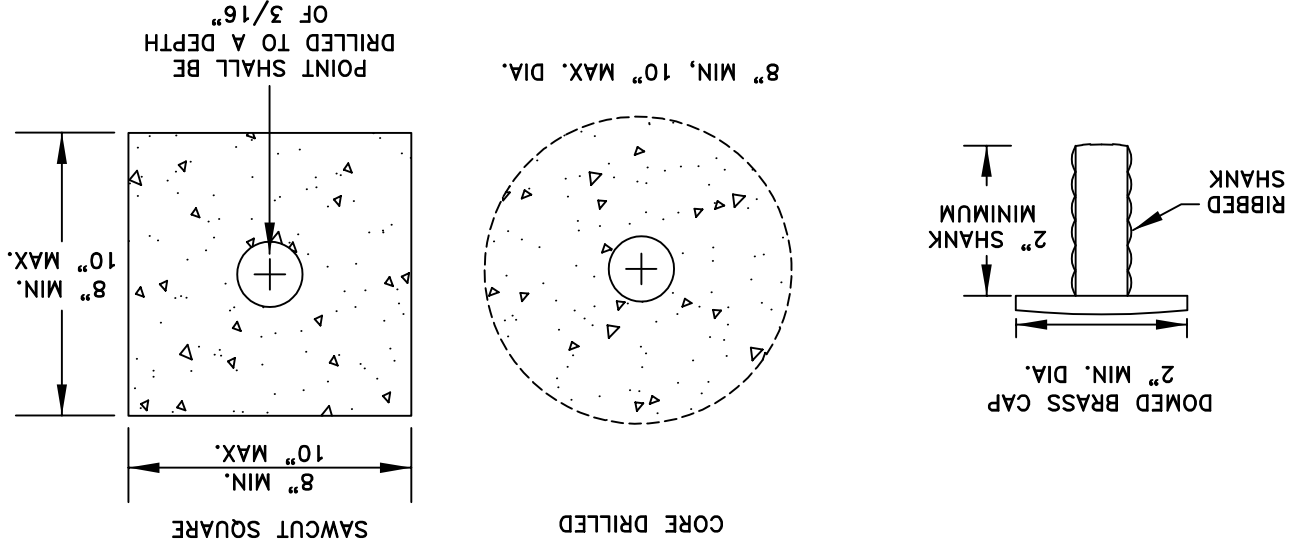
DES. PW	DWG. BY PW	CK'D BY MW	DATE JAN. 2015	SCALE NOT TO
---------	------------	------------	----------------	--------------

CITY ENGINEER	APPROVED BY:	DWG. NO. ST-19
---------------	--------------	----------------

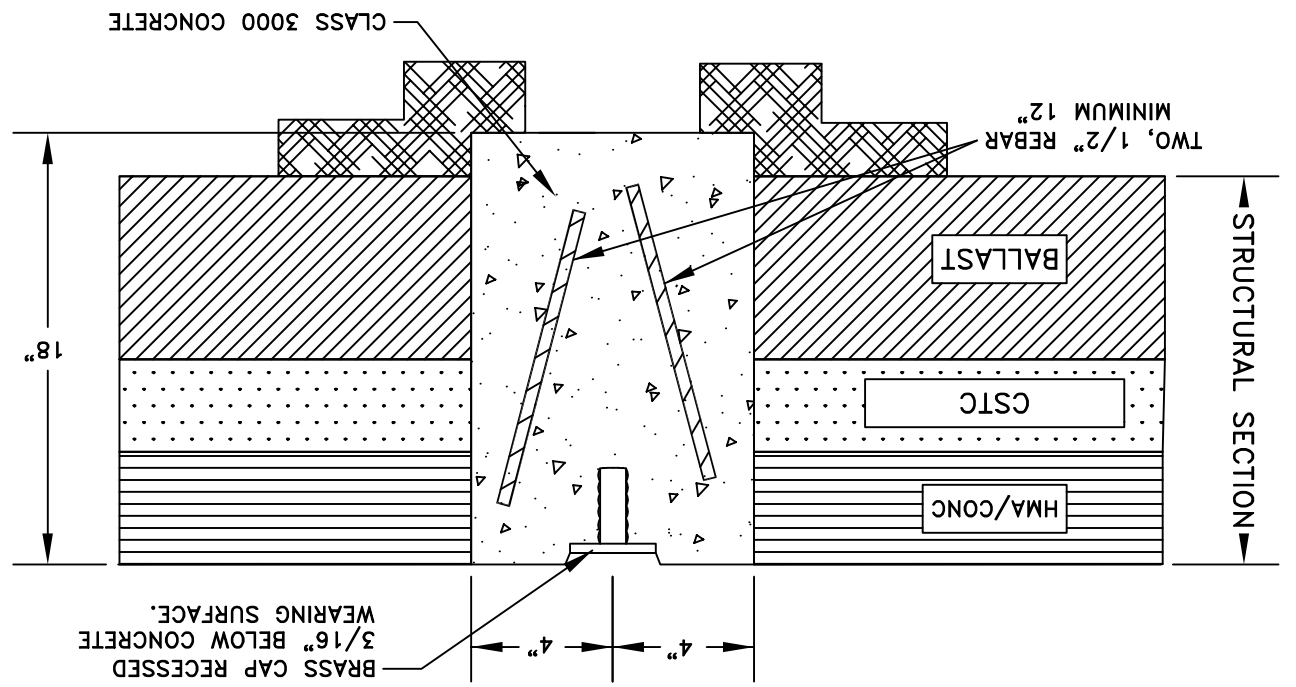
# SURFACE MONUMENT IN PAVEMENT

CITY OF TUMWATER, WASHINGTON  
DEPT. OF PUBLIC WORKS

- GENERAL NOTES:
1. THIS MONUMENT TO BE USED IN BITUMINOUS, HMA, OR CONCRETE PAVEMENTS.
  2. CAP SHALL BE DOMED BRASS, ALUMINUM OR OTHER NON-FERROUS METAL, MINIMUM 2" DIAMETER.
  3. CONCRETE TO BE PLACED ON A FIRM AND UNYIELDING FOUNDATION.
  4. MONUMENT POSITION SHALL BE SET BY A PROFESSIONAL LAND SURVEYOR LICENSED BY THE STATE OF WASHINGTON WHOSE CERTIFICATE NUMBER SHALL BE STAMPED ON CAP.



PLAN



SECTION