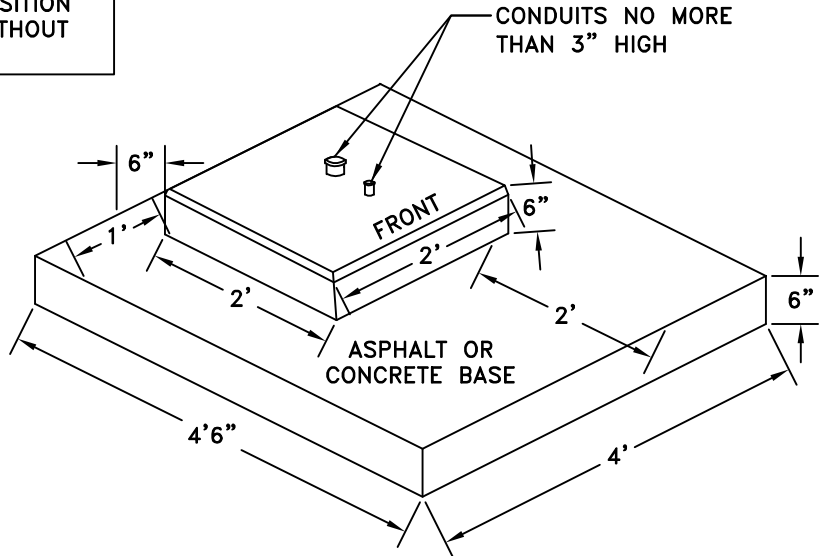
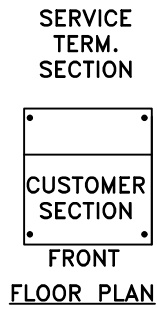


MILBANK WEST
CP3B-11115A-SPO58

THE UNIT SHALL CONTAIN THE FOLLOWING
ADDITIONAL EQUIPMENT: ONE 2 POSITION
TEST SWITCH ONE PHOTO CELL WITHOUT
SHIELD

5' CLEARANCE
ON ALL SIDES



FOUNDATION

FOUNDATIONS IN UN-DEVELOPED AREAS SHALL
PROVIDE 4' ASPHALT OR CONCRETE BASE.
5' CLEARANCE OF VEGETATION ON ALL SIDES.

SPECIFICATIONS:

1. STANDARD VOLTAGE IS 120/240V; 100 AMP.
2. CALTRANS TYPE 3B SERVICE OR U.L. APPROVED EQUAL.
3. TYPE 3R RAIN PROOF ENCLOSURE.
4. NATURAL ALUMINUM CONSTRUCTION.
5. INTERIORS WILL ACCEPT PLUG-IN BREAKERS (BRYANT, GE, WESTINGHOUSE, CROUSE-HINDS).
6. 2-30 AMP LIGHTING CONTACTORS.

GENERAL NOTES:

1. THE SERVICE DISCONNECT SHALL BE INSTALLED BEHIND THE SIDEWALK NEAR A PROPERTY LINE AND WHENEVER POSSIBLE IN AN OPEN SPACE.
2. INSTALLATION SHALL BE CONFORM TO THE NATIONAL ELECTRICAL CODE, WSDOT AND THE CITY OF TUMWATER STANDARDS.
3. THE CLEARANCE ZONE AROUND THE SERVICE CABINET SHALL BE 5' ON ALL SIDES.
4. THE CABINET FOUNDATION (TOP TIER) SHALL BE PER THE MANUFACTURER'S REQUIREMENTS. DO NOT POUR THE FOUNDATION UNTIL THAT INFORMATION IS RECEIVED.

CITY OF TUMWATER, WASHINGTON DEPT. OF PUBLIC WORKS				
METERED SERVICE DISCONNECT FOR STREET LIGHTING AND TRAFFIC SIGNALS				
APPROVED BY:				DWG. NO.
CITY ENGINEER				ST-17
DES. PW	DWG. BY PW	CK'D BY MW	DATE JAN. 2015	NOT TO SCALE