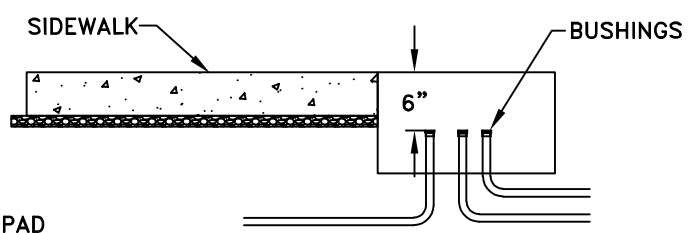
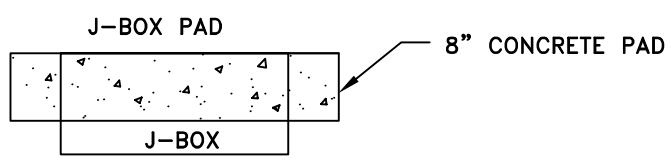
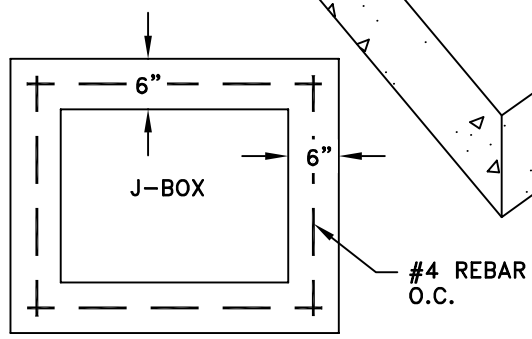
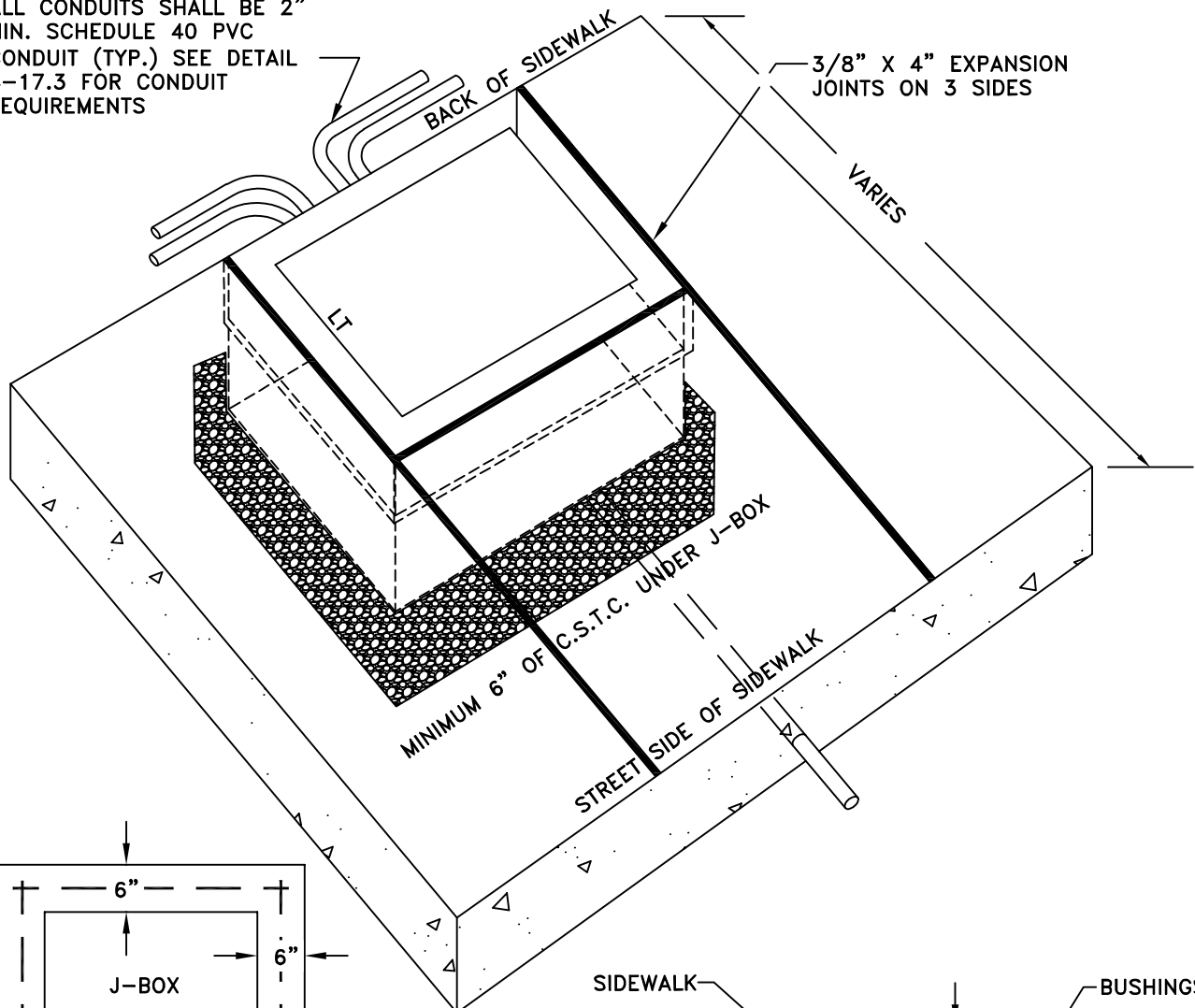


ALL CONDUITS SHALL BE 2" MIN. SCHEDULE 40 PVC CONDUIT (TYP.) SEE DETAIL 4-17.3 FOR CONDUIT REQUIREMENTS



GENERAL NOTES:

1. SEE W.S.D.O.T. STANDARD PLAN J-11a FOR J-BOX TYPE AND SIZE.
2. ALL LIDS SHALL BE STEEL AND MARKED WITH LT OR TS PER W.S.D.O.T. STANDARD PLAN J-11a.
3. IF NO SIDEWALK EXISTS, A CONCRETE PAD SHALL BE CONSTRUCTED 6" THICK, 6" WIDE, COMPLETELY SURROUNDING THE J-BOX WITH ONE #4 REBAR ON CENTER EACH SIDE AND TIED AT CORNERS.
4. CONDUIT RUNS SHALL NOT EXCEED 200 FEET BETWEEN JUNCTION BOXES.
5. THIS J-BOX INSTALLATION SHALL ONLY BE USED WHEN THE FRONT OF THE SIDEWALK INSTALLATION IS NOT POSSIBLE. SEE DETAIL 4-17.4
6. SPARE 2" CONDUIT REQUIRED ON ARTERIALS, COLLECTORS AND RESIDENTIAL STREETS.

CITY OF TUMWATER, WASHINGTON DEPT. OF PUBLIC WORKS				
J-BOX				
APPROVED BY:				DWG. NO.
CITY ENGINEER				ST-9
DES. PW	DWG. BY PW	CK'D BY MW	DATE JAN. 2015	NOT TO SCALE