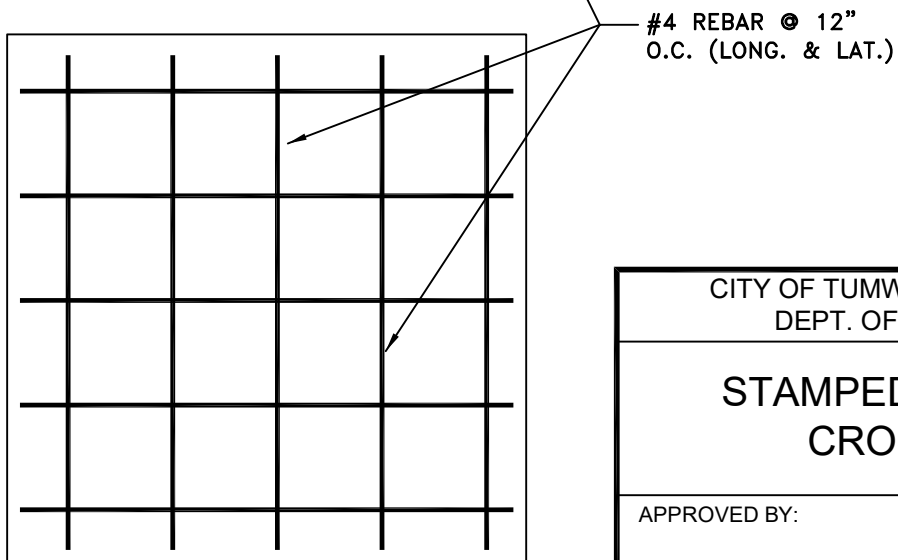
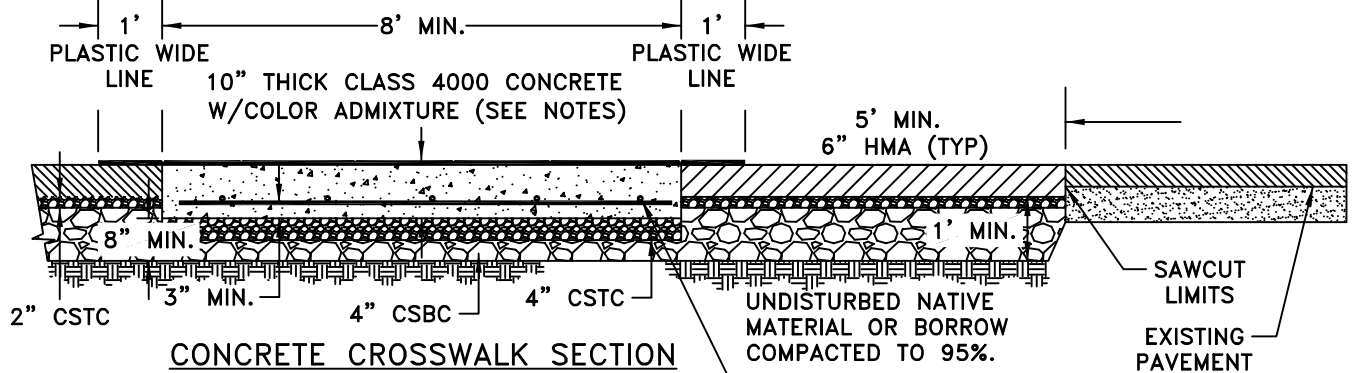


GENERAL NOTES:

1. PIGMENTED STAMPED CONCRETE SHALL BE BOMANITE CLASS 4000 OR APPROVED EQUAL.
2. THE STAMPED CONCRETE PATTERN SHALL BE "USED BRICK BASKETWEAVE". THE BASE COLOR SHALL BE BRICK RED AND THE RELEASE AGENT COLOR SHALL BE BRICK RED.
3. CONCRETE SHALL BE PIGMENTED WITH BASE COLOR AND THE POWERED RELEASE AGENT SHALL THEN BE APPLIED TO GIVE THE HIGHLIGHTS DESIRED.
4. THE RELEASE AGENT SHALL BE HEAVY-DUTY AS RECOMMENDED BY THE MANUFACTURER OF THE STAMPING PATTERN.
5. THE CONCRETE SHALL BE STAMPED WITH INCONSISTENCIES IN THE PATTERN AND HAND FINISHED.
6. THE CONCRETE SHALL CURE FOR 4 DAYS AND THEN BE PRESSURE WASHED TO REMOVE THE REMAINING RELEASE AGENT.
7. A WEATHERPROOFING SEALER AND A CLEAR ACRYLIC SEALER WITH MOSS CONTROL AGENT SHALL BE APPLIED TO THE FINISHED CONCRETE SURFACE.
8. EXPANSION JOINTS SHALL BE INSTALLED AT THE CENTER OF THE ROAD AND EVERY 10'.



REBAR LAYOUT SECTION

CITY OF TUMWATER, WASHINGTON DEPT. OF PUBLIC WORKS				
STAMPED CONCRETE CROSSWALK				
APPROVED BY:				DWG. NO.
CITY ENGINEER				ST-6
DES. PW	DWG. BY PW	CK'D BY MW	DATE JAN. 2015	NOT TO SCALE