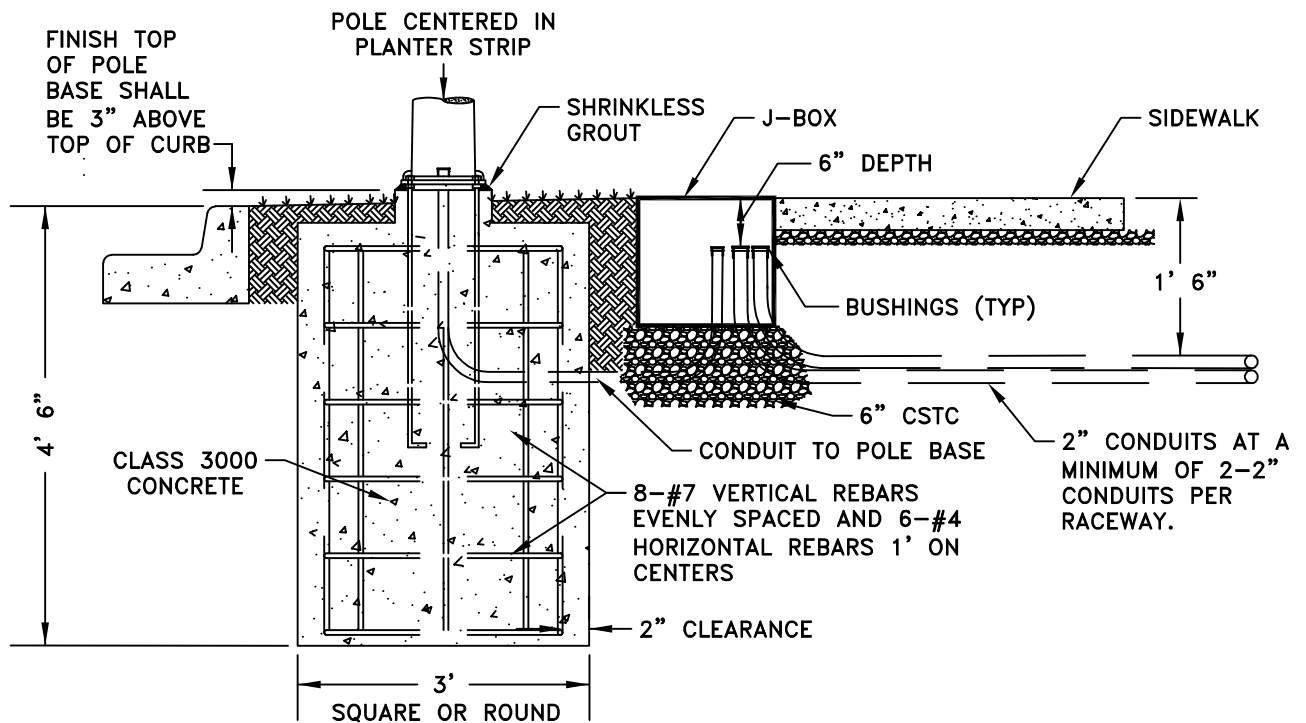


POLE BASE TOP SECTION



GENERAL NOTES:

1. THE FOUNDATION IS DESIGNED FOR 2000 PSF AVERAGE SOIL LATERAL BEARING PRESSURE.
2. BOLT PATTERN PER MANUFACTURER'S SPECIFICATIONS.
3. FOR DETAILS NOT SHOWN, USE MANUFACTURER'S SPECIFICATIONS AND DETAILS.
4. FOUNDATION HOLES SHALL BE AUGERED.

CITY OF TUMWATER, WASHINGTON DEPT. OF PUBLIC WORKS				
LUMINAIRE FOUNDATION				
APPROVED BY:				DWG. NO.
CITY ENGINEER				ST-14
DES. PW	DWG. BY PW	CK'D BY MW	DATE JAN. 2015	NOT TO SCALE