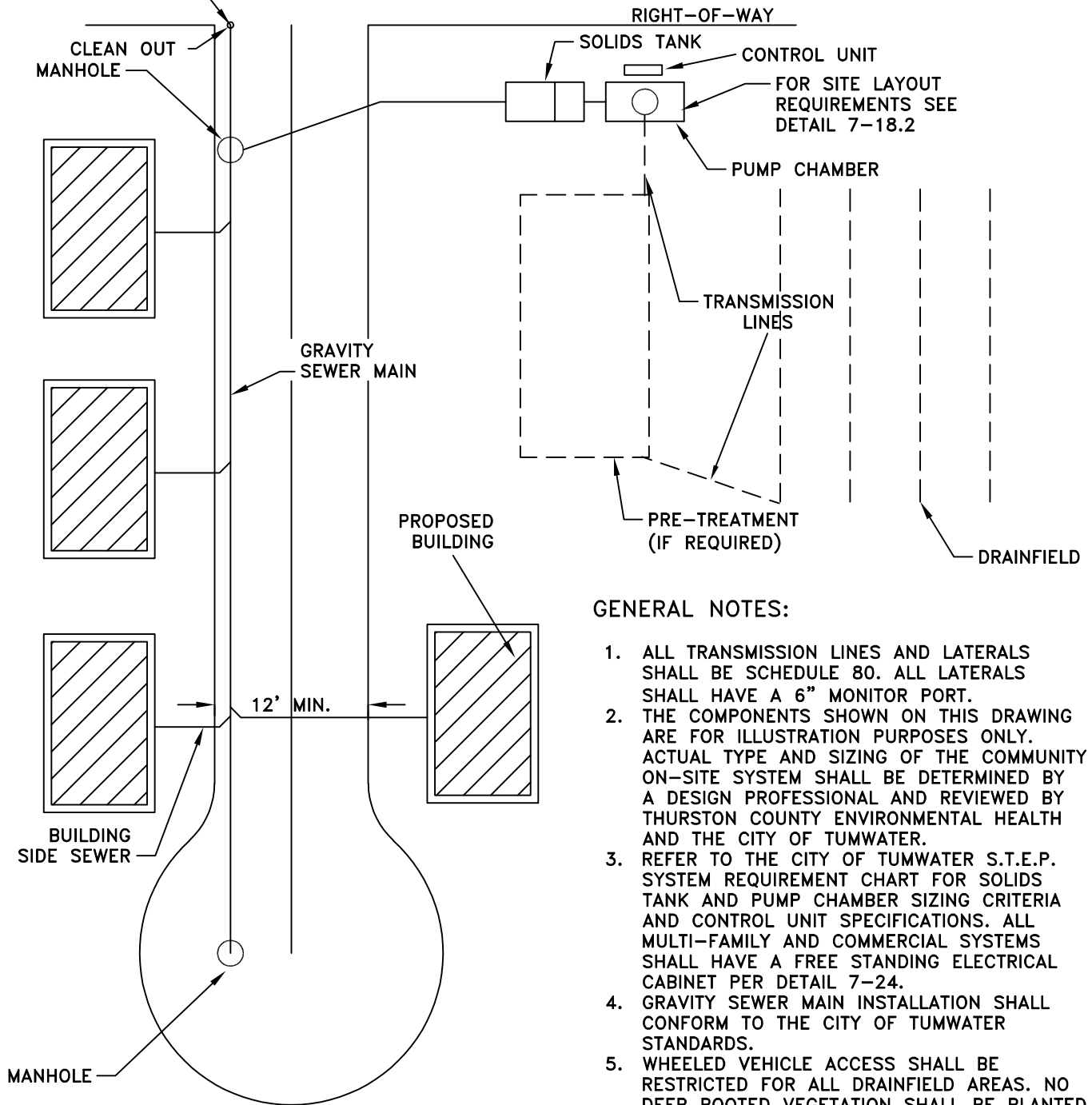


GRAVITY DRY-LINE TO THE EDGE OF RIGHT-OF-WAY FOR FUTURE CONNECTION



GENERAL NOTES:

1. ALL TRANSMISSION LINES AND LATERALS SHALL BE SCHEDULE 80. ALL LATERALS SHALL HAVE A 6" MONITOR PORT.
2. THE COMPONENTS SHOWN ON THIS DRAWING ARE FOR ILLUSTRATION PURPOSES ONLY. ACTUAL TYPE AND SIZING OF THE COMMUNITY ON-SITE SYSTEM SHALL BE DETERMINED BY A DESIGN PROFESSIONAL AND REVIEWED BY THURSTON COUNTY ENVIRONMENTAL HEALTH AND THE CITY OF TUMWATER.
3. REFER TO THE CITY OF TUMWATER S.T.E.P. SYSTEM REQUIREMENT CHART FOR SOLIDS TANK AND PUMP CHAMBER SIZING CRITERIA AND CONTROL UNIT SPECIFICATIONS. ALL MULTI-FAMILY AND COMMERCIAL SYSTEMS SHALL HAVE A FREE STANDING ELECTRICAL CABINET PER DETAIL 7-24.
4. GRAVITY SEWER MAIN INSTALLATION SHALL CONFORM TO THE CITY OF TUMWATER STANDARDS.
5. WHEELED VEHICLE ACCESS SHALL BE RESTRICTED FOR ALL DRAINFIELD AREAS. NO DEEP ROOTED VEGETATION SHALL BE PLANTED IN THE DRAINFIELD AREA.

CITY OF TUMWATER, WASHINGTON
DEPT. OF PUBLIC WORKS

**TYPICAL INTERIM SEWER
FACILITIES LAYOUT**

APPROVED

DWG. NO.

CITY ENGINEER

SS-34

DES.
PW

DWG. BY
PW

CK'D BY
KMC

DATE
JAN. 2012

NOT TO
SCALE