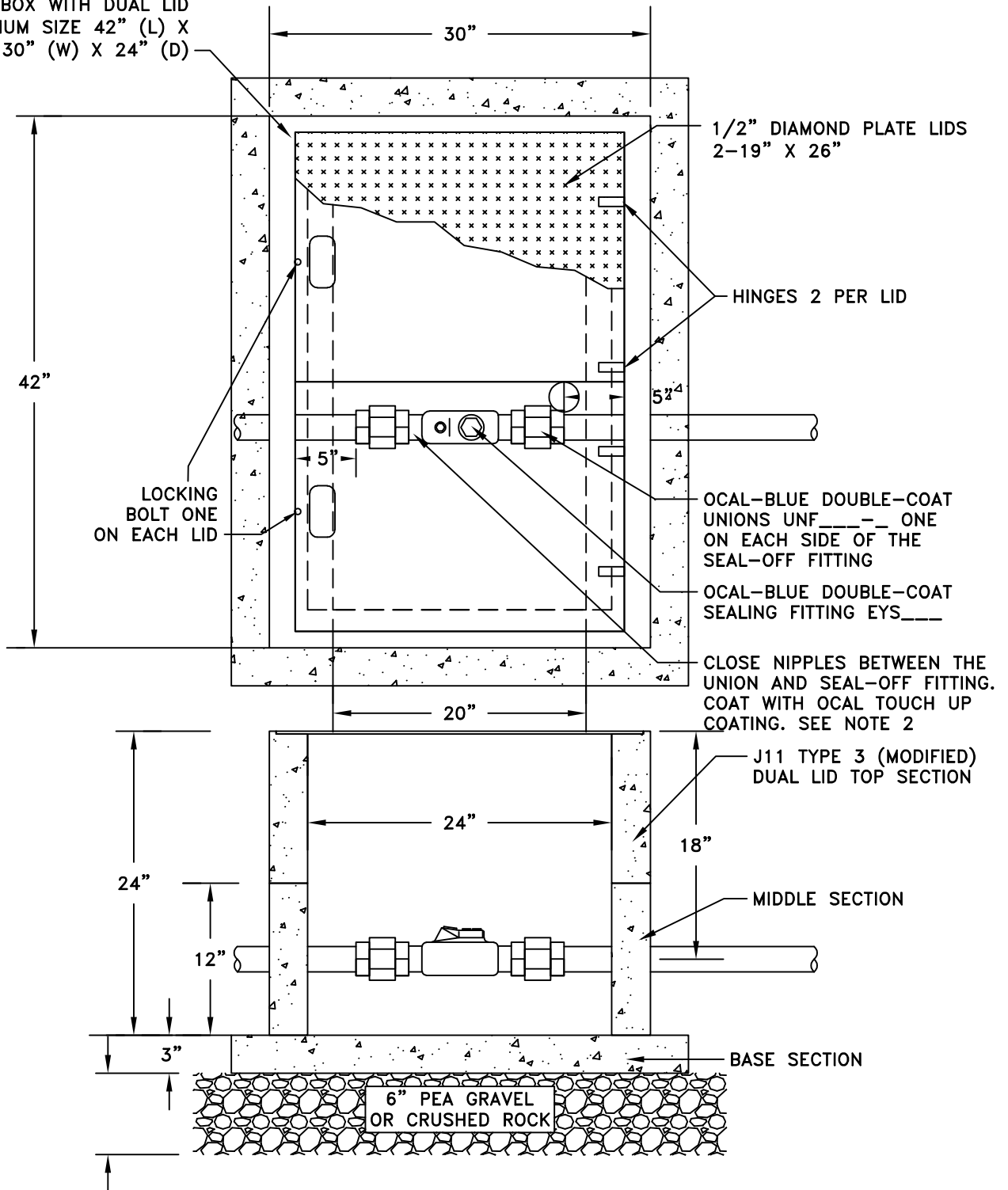


FOGTITE J11 TYPE 3  
J-BOX WITH DUAL LID  
MINIMUM SIZE 42" (L) X  
30" (W) X 24" (D)



**GENERAL NOTES:**

1. ALL MATERIALS SHALL HAVE A MINIMUM OF 40 MIL PVC COATING BONDED TO THE EXTERIOR.
2. ALL EXPOSED METAL SHALL BE COATED WITH OCAL TOUCH UP COATING.
3. A DRAIN SHALL BE INSTALLED IN THE J-BOX TO KEEP THE J-BOX FROM FILLING WITH WATER.
4. THE SIZES AND AMOUNT OF CONDUITS TO BE INSTALLED SHALL BE DETERMINED BY THE APPURTENANCES USED.
5. THE J-BOX SHALL BE INSTALLED IN THE CONCRETE SLAB WHICH IS PART OF THE STATION PLATFORM.

CITY OF TUMWATER, WASHINGTON DEPT. OF PUBLIC WORKS				
<b>SEAL-OFF &amp; UNION INSTALLATION</b>				
APPROVED				DWG. NO.
CITY ENGINEER				<b>SS-30</b>
DES. PW	DWG. BY PW	CK'D BY KMC	DATE JAN. 2012	NOT TO SCALE