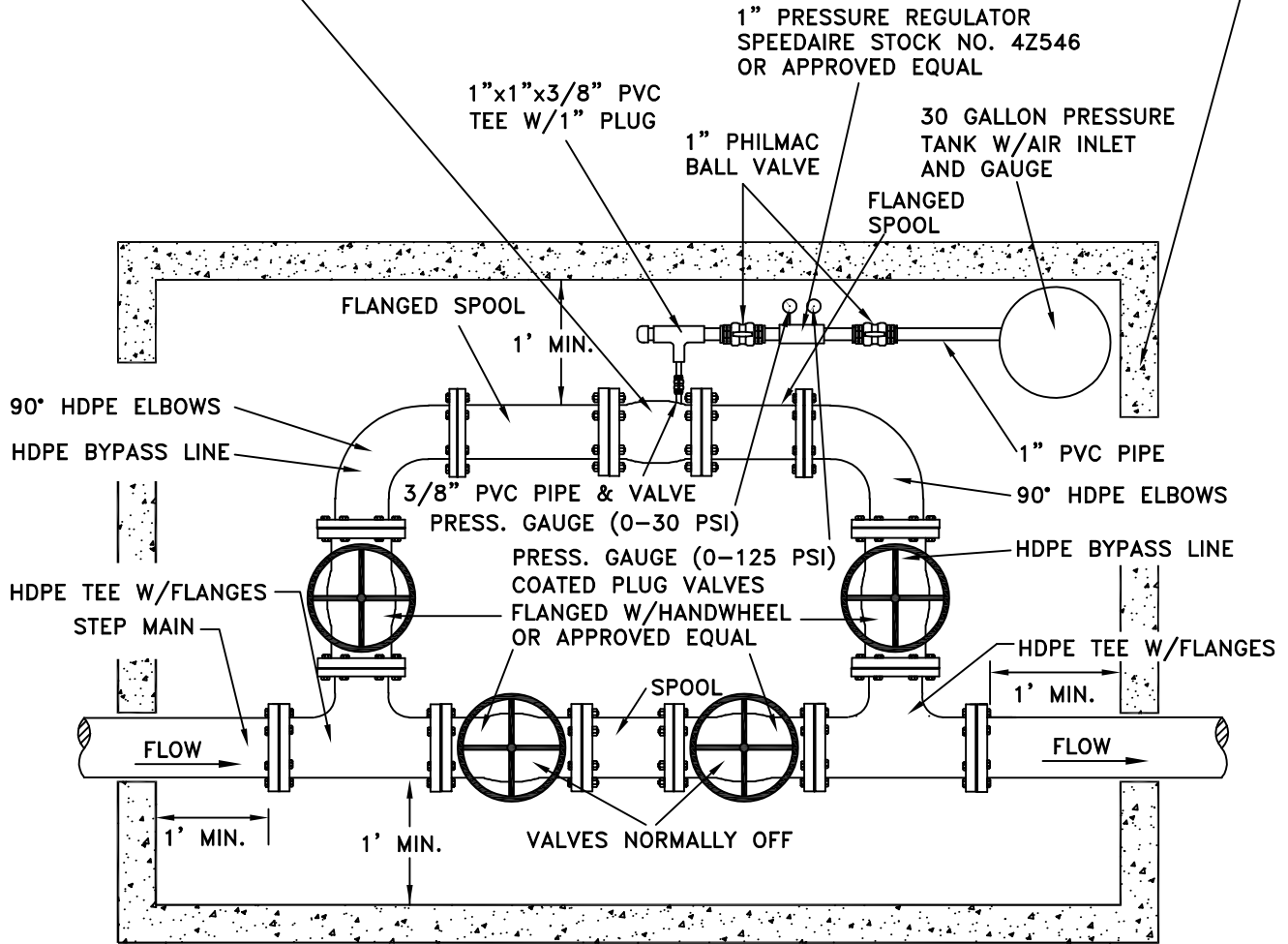


PRESSURE SUSTAINING DEVICE ROLL SEAL VALVE MOD.
 #06-SS-N7-L-30 W/CONTROL SYSTEM:
 100-PL1-PL2-X OR APPROVED EQUAL

UTILITY VAULT WITH BOTTOM AND SUMP. THE LID SHALL BE WATER PROOF SPRING LOADED TYPE.



GENERAL NOTES:

1. THE PIPING AND FITTINGS FOR THE PRESSURE SUSTAINING DEVICE SHALL BE MADE OF HDPE FUSED PIPING.
2. PIPE STANDS ARE REQUIRED UNDER PIPING. ON THIS APPLICATION 4 STANDS ARE REQUIRED.
3. THE VAULT SHALL BE EQUIPPED WITH A SUMP TO CONTAIN EFFLUENT LIQUIDS.
4. ADD SPOOL PIECES OF PIPING WHEN NEEDED BUT THE 1' MIN. DISTANCE FROM THE WALLS SHALL BE MAINTAINED.
5. PRESSURE GAUGES SHALL HAVE A VALVE PLACED IN LINE BEFORE THE GAUGE.

CITY OF TUMWATER, WASHINGTON DEPT. OF PUBLIC WORKS				
PRESSURE SUSTAINING DEVICE				
APPROVED				DWG. NO.
CITY ENGINEER				SS-23
DES. PW	DWG. BY PW	CK'D BY KMC	DATE JAN. 2012	NOT TO SCALE