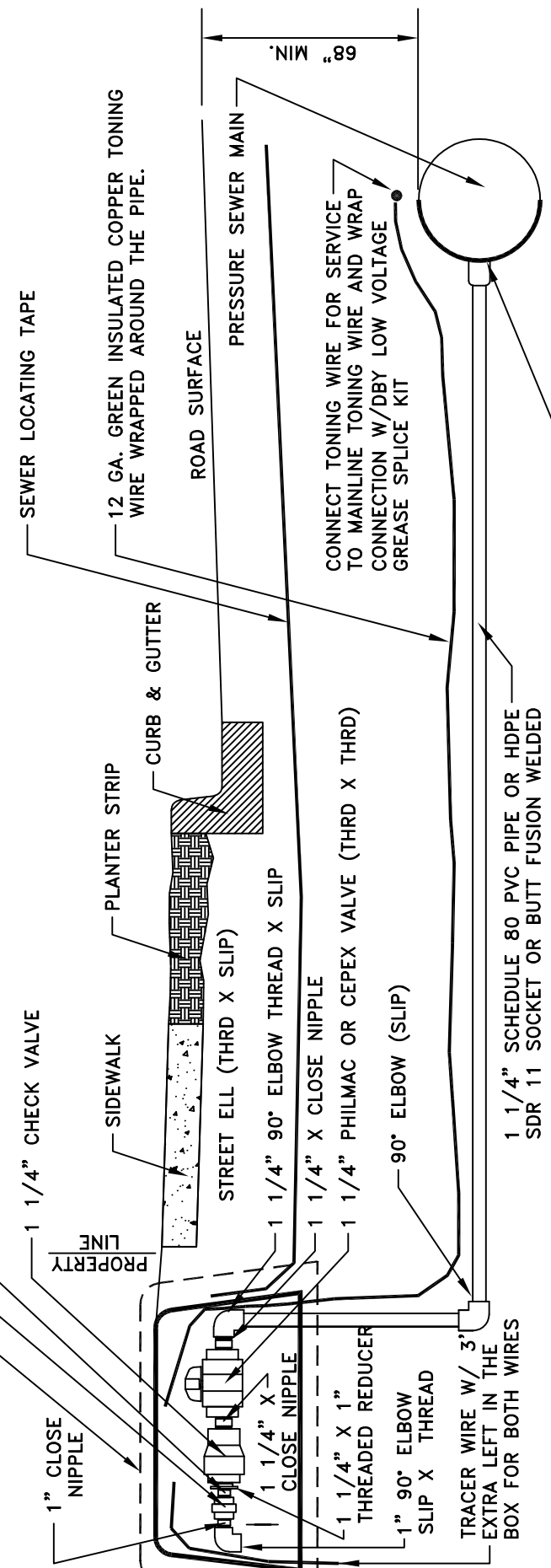


SEE DETAIL SS-22.1 FOR TWO TYPES OF SERVICE CONNECTION ASSEMBLIES APPROVED FOR SINGLE FAMILY AND DUPLEX GRINDER SYSTEMS

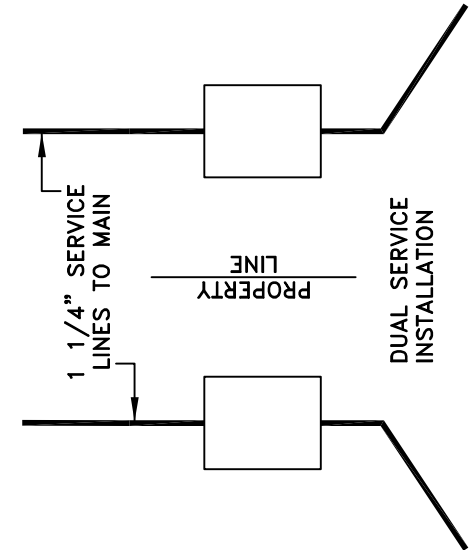
- 1" THREADED UNION
- 1" CLOSE NIPPLE
- 1 1/4" CHECK VALVE



1 1/4" X MAIN DIA. PVC REDUCING WYE,  
GASKET X GASKET X SLIP OR AN 1 1/2" (306)  
ROMAC STAINLESS STEEL SADDLE AND REDUCER  
1 1/2" X 1 1/4" (316 STAINLESS STEEL).

**GENERAL NOTES:**

1. FILL SERVICE BOX WITH FIBERGLASS INSULATION AT TIME OF ON-SITE CONNECTION TO THE STUB.
2. AFTER THE HYDRO-STATIC TEST HAVE BEEN APPROVED BY THE CITY INSPECTOR THE CHECK VALVE SHALL BE INSTALLED.
3. FOR HDPE REQUIREMENTS SEE CHAPTER 7D.
4. FUTURE LOT CONNECTION SHALL BE MADE AT THE 90° ELBOW WITH THE TRACER WIRE INCLUDED IN THE INSTALLATION.
5. ALL FITTINGS SHALL BE SCHEDULE 80.
6. THE 1 1/4" VALVE SHALL BE A PHILMAC THREADED.
7. THE CHECK VALVE SHALL BE KING BRO.S # KSC 1250 T THREADED.
8. SERVICE BOX-CARSON INDUSTRIES MODEL NO. 1419 WITH BOLTED, FLAT COVER AND NO. 1419 EXTENSION WHEN IN NON-TRAFFIC AREAS, "VALVE BOX LID SHALL BE MARKED SEWER."



CITY OF TUMWATER, WASHINGTON DEPT. OF PUBLIC WORKS				
<b>S.T.E.P. CONNECTION</b> SINGLE & DUPLEX SEWER SERVICE				
APPROVED				DWG. NO.
CITY ENGINEER				<b>SS-20</b>
DES. PW	DWG. BY PW	CK'D BY KMC	DATE JAN. 2012	NOT TO SCALE