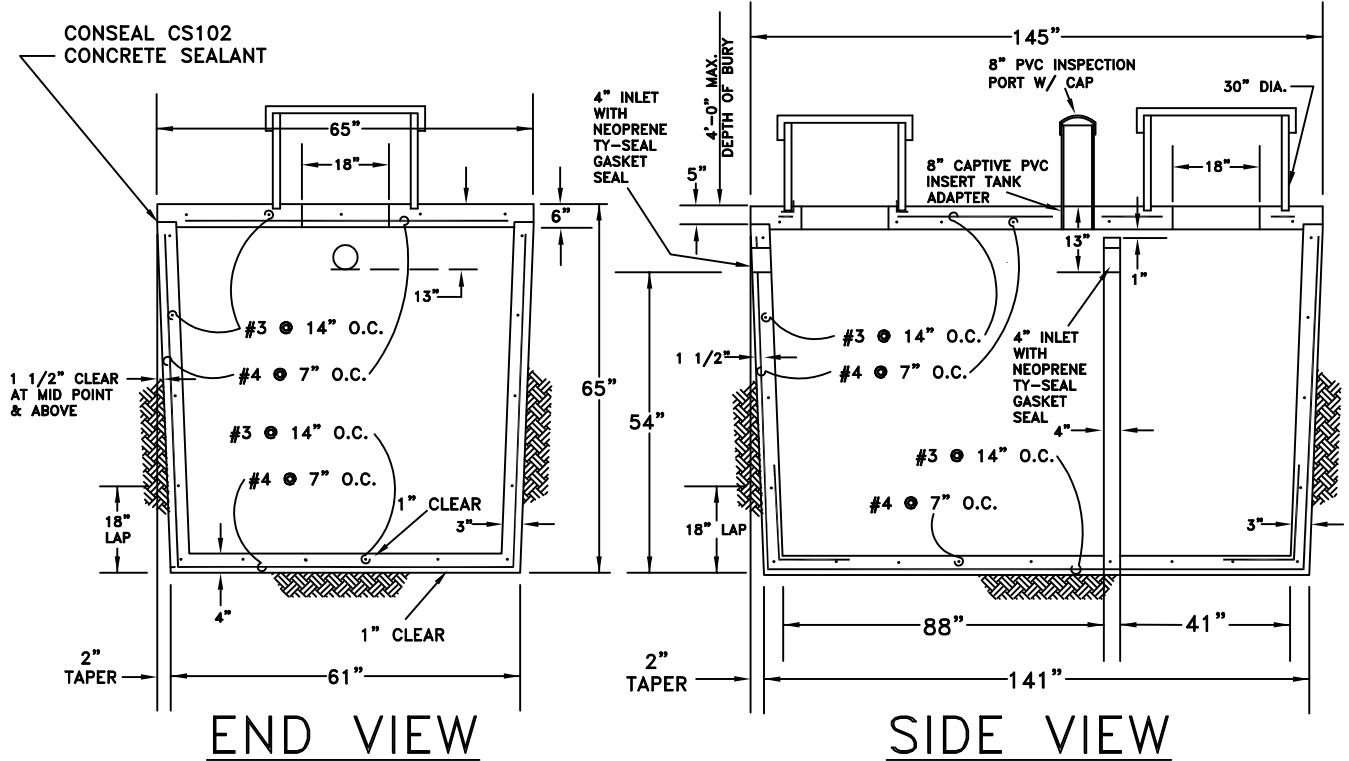
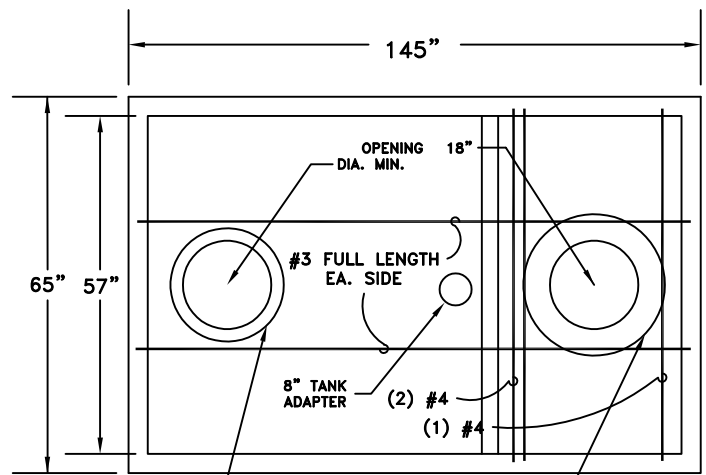


CONSEAL CS102  
CONCRETE SEALANT



**END VIEW**

**SIDE VIEW**



**PLAN**

**GENERAL NOTES:**

1. SEE SECTION 7E.060 FOR APPROVED TANKS.
2. REINFORCING STEEL: DEFORMED BAR ASTM A615 GRADE 60 FY=60,000 P.S.I.
3. CONCRETE: F'C=4000 P.S.I. COMPRESSIVE STRENGTH @ 28 DAY TEST. MAX. AGGREGATE SIZE 3/4"
4. LOADING: TOP SLAB: 2500 LB. WHEEL LOAD OVER 2 1/2 SQ. FT. 400 P.S.F. SOIL LOAD LATERAL LOAD: 62.4 P.C.F. HYDROSTATIC SOIL BEARING: 1000 P.S.F. ASSUMED
5. THIS TANK IS NOT DESIGNED TO WITHSTAND AN H-20 LIVE LOAD.
6. CALL APPROVED TANK MANUFACTURER FOR DIMENSIONS. DIMENSIONS MAY VARY BETWEEN MANUFACTURERS.
7. \*\*\* THE INSIDE AND OUTSIDE SURFACES SHALL BE PROTECTED BY APPLYING A HEAVY CEMENT-BASE, WATER PROOF COATING OF THOROSEAL OR APPROVED EQUAL.

24". DIA.  
FLANGED TANK  
ADAPTER OSI  
PRTA24

30". DIA.  
FLANGED TANK  
ADAPTER OSI  
FRTA 30

CITY OF TUMWATER, WASHINGTON DEPT. OF PUBLIC WORKS				
<b>1,500 GALLON S.T.E.P. SEPTIC TANK</b>				
APPROVED				DWG. NO.
CITY ENGINEER				<b>SS-12</b>
DES.	DWG. BY	CK'D BY	DATE	NOT TO SCALE