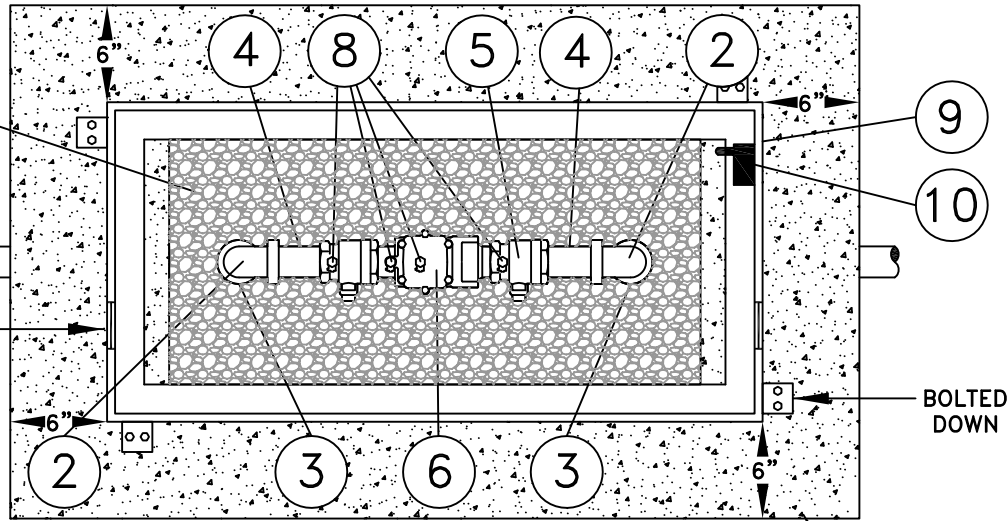


LEAVE CENTER AREA OPEN FOR DRAINAGE AND FOR WORKING ON ASSEMBLY

# PLAN

SCREENED DRAIN HOLE (TYP.) BOTH ENDS



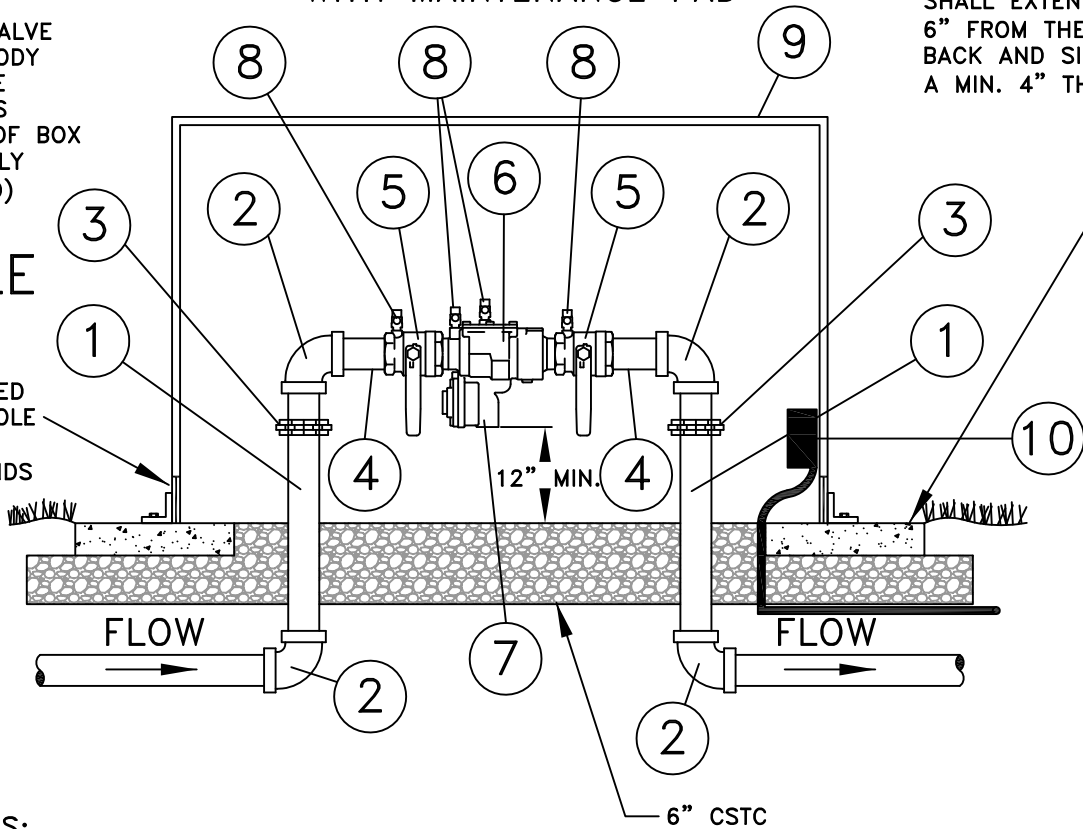
- MATERIAL LIST:
- ① SERVICE LINE
  - ② 90° BEND
  - ③ UNION
  - ④ NIPPLE
  - ⑤ SHUT-OFF VALVE
  - ⑥ ASSEMBLY BODY
  - ⑦ RELIEF VALVE
  - ⑧ TESTS COCKS
  - ⑨ FREEZE PROOF BOX
  - ⑩ POWER SUPPLY (IF REQUIRED)

# FRONT OF HOT BOX WITH MAINTENANCE PAD

CONCRETE PAD SHALL EXTEND 6" FROM THE BACK AND SIDES A MIN. 4" THICK

# PROFILE

SCREENED DRAIN HOLE (TYP.) BOTH ENDS



## GENERAL NOTES:

1. ASSEMBLY SHALL BE D.O.H. APPROVED.
2. THOROUGHLY FLUSH LINES PRIOR TO INSTALLATION.
3. DO NOT INSTALL IN AREA SUBJECT TO FLOODING.
4. ALL PIPE AND FITTINGS SHALL BE BRASS.
5. DRAIN HOLE OPENINGS SHALL BE 1 1/2 TIMES THE DIAMETER OF SUPPLY LINE AND INCLUDE SCREENING.
6. ALL REDUCED PRESSURE BACKFLOW ASSEMBLIES SHALL BE INSTALLED IN A HOT BOX TO PREVENT THE UNIT FROM FREEZING.  
THE HOT BOX MAY BE EQUIPPED WITH ELECTRICAL COMPONENTS (CONDUITS, WIRING, ETC.) AND POWER SUPPLIED BY THE OWNER WHEN NECESSARY OR REQUIRED.
7. ALL CITY OF TUMWATER DUMP STATION SITES SHALL BE EQUIPPED WITH A FACTORY HEATED HOT BOX, A 1 1/2" CONDUIT AND SHALL BE WIRED FROM THE CONTROL CABINET TO THE HOT BOX AND THERMOSTAT.

CITY OF TUMWATER, WASHINGTON  
DEPT. OF PUBLIC WORKS

## REDUCED PRESSURE BACKFLOW ASSEMBLY FOR 2" OR SMALLER

APPROVED BY:

DWG. NO.

CITY ENGINEER

WA-36

DES.  
PW

DWG. BY  
PW

CK'D BY  
KMC

DATE  
JULY 2014

NOT TO  
SCALE