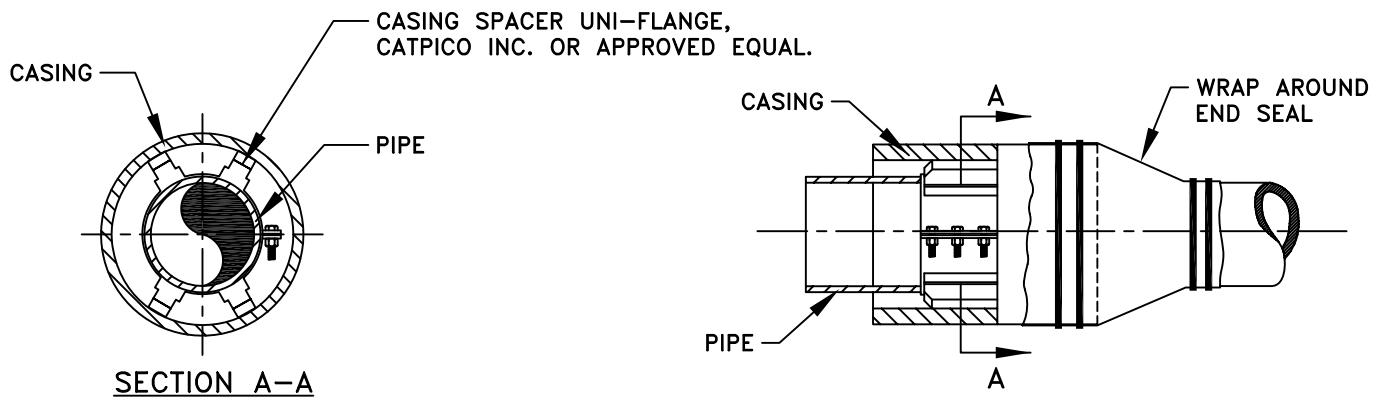


CASING SPACERS



GENERAL NOTES:

1. CASING SPACERS SHALL BE MANUFACTURED GALVANIZED OR STAINLESS STEEL SIZED FOR THE TYPE OF PIPE. CASING SIZED PER THE MANUFACTURERS RECOMMENDATION.
2. CASING TO BE SIZED TO PROVIDE MINIMUM 2" CLEARANCE FOR THE TYPE OF FITTINGS APPROVED BY THE CITY ENGINEER.
3. PIPE JOINTS WITHIN CASING TO BE RESTRAINED JOINT AS APPROVED BY THE CITY ENGINEER.
4. FOR PIPE 12" AND SMALLER, 2 SPACERS PER JOINT OF 13' SEWER PIPE, 3 SPACERS PER JOINT OF 18' OR 20' WATER PIPE. FOR PIPE LARGER THAN 12", 4 SPACERS PER JOINT SHALL BE USED.

CITY OF TUMWATER, WASHINGTON DEPT. OF PUBLIC WORKS				
ENCASEMENT SPACER INSTALLATION				
APPROVED BY:				DWG. NO.
CITY ENGINEER				WA-6
DES. PW	DWG. BY PW	CK'D BY KMC	DATE JULY 2014	NOT TO SCALE