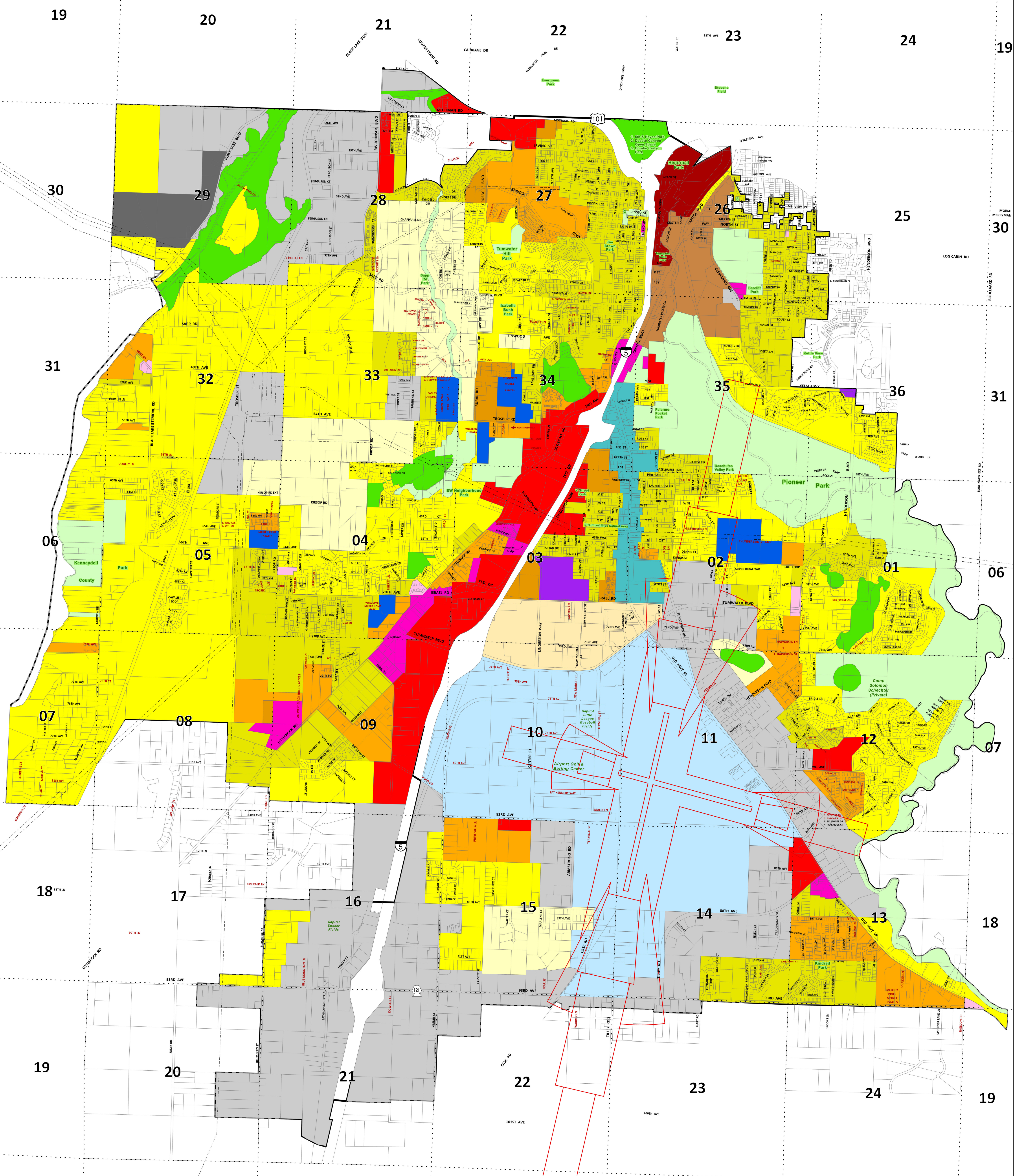


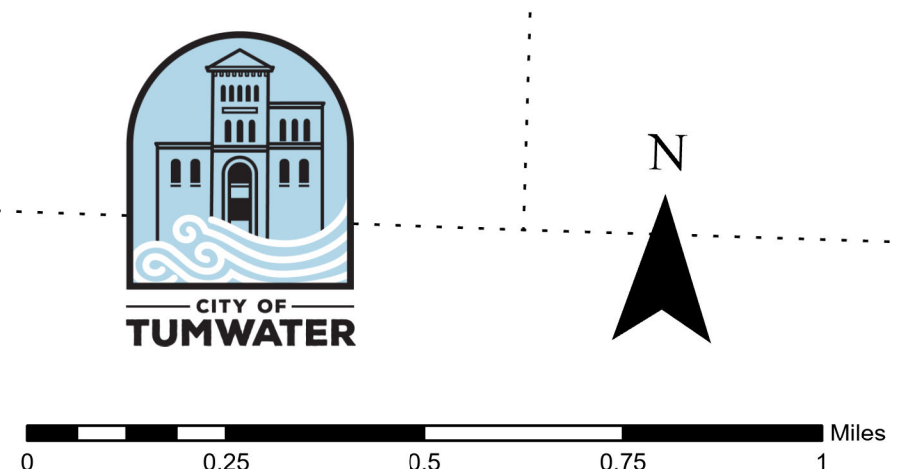
# Zoning Map for Tumwater and the Urban Growth Area



**CITY OF TUMWATER GIS AND MAPPING DISCLAIMER**  
 This map product is prepared by the City of Tumwater Transportation and Engineering Department for and intended for internal department use. The City of Tumwater or agents thereof make no warranties, either expressed or implied in matters of a public or private access or in matters that can be confirmed by an official survey by a professional land surveyor or in the merchantability or fitness of the data included herein for a particular purpose. The user agrees to indemnify and hold the City of Tumwater harmless from any and all damages, liability, cost or loss including reasonable attorneys' fees and costs of defense that the City of Tumwater may suffer as a result of any claims, demands, costs, or judgments arising from any use of this product and any errors or omissions.

**ADDRESSING NOTE:**  
 The City of Tumwater has two addressing directionals: SE and SW. Capitol Boulevard is the dividing between SE and SW addresses north of the Olympia Airport/ Tilley Road South, where it meets 93rd Avenue, is the dividing line between SE and SW from the north end of the airport to the southern City limits.  
 Floodplains are shown on the Section Zoning Map available at City Hall.  
 When a greenbelt is established to protect a wetland, the greenbelt zone district shown on the map(s) shall follow the actual delineated wetland edge.

**MAP NOTES:**  
 This map last updated: April 23, 2024  
 This map was created by the City of Tumwater Transportation and Engineering Department using ArcGIS Pro 3.2.1.



Tumwater Zoning Districts			
	Airport Related Industrial		Manufactured Home Park
	Brewery District		Mixed-Use
	Business Park		Multi-Family High Density
	Capitol Boulevard Community		Multi-Family Medium Density
	Commercial Development		Neighborhood Commercial
	Community Services		Open Space
	General Commercial		Residential/Sensitive Resource
	Green Belt		Single Family Low Density
	Heavy Industrial		Single Family Medium Density
	Historic Commercial		Town Center
	Light Industrial		Airport Overlay Zone