

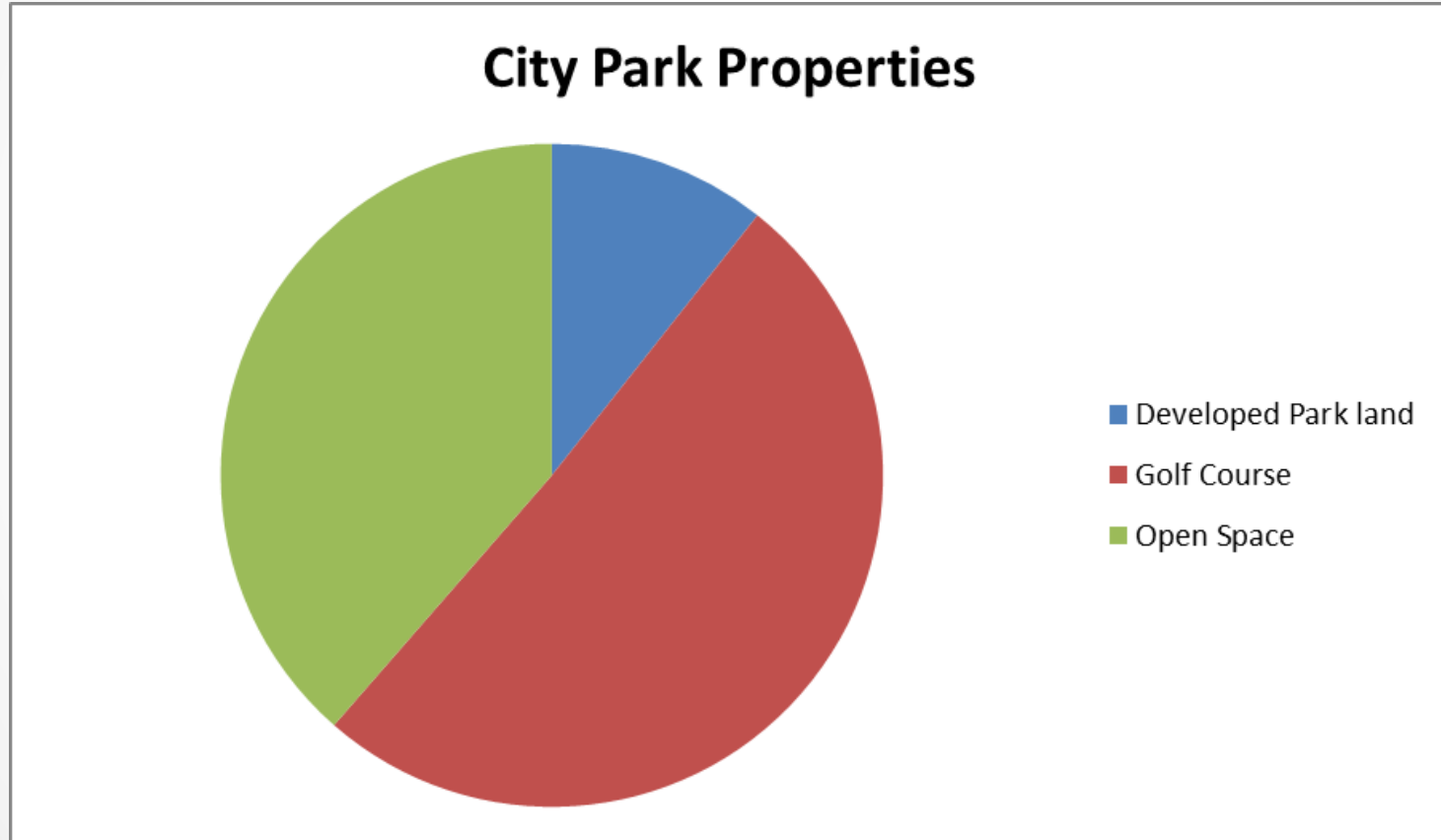


Metropolitan Parks District

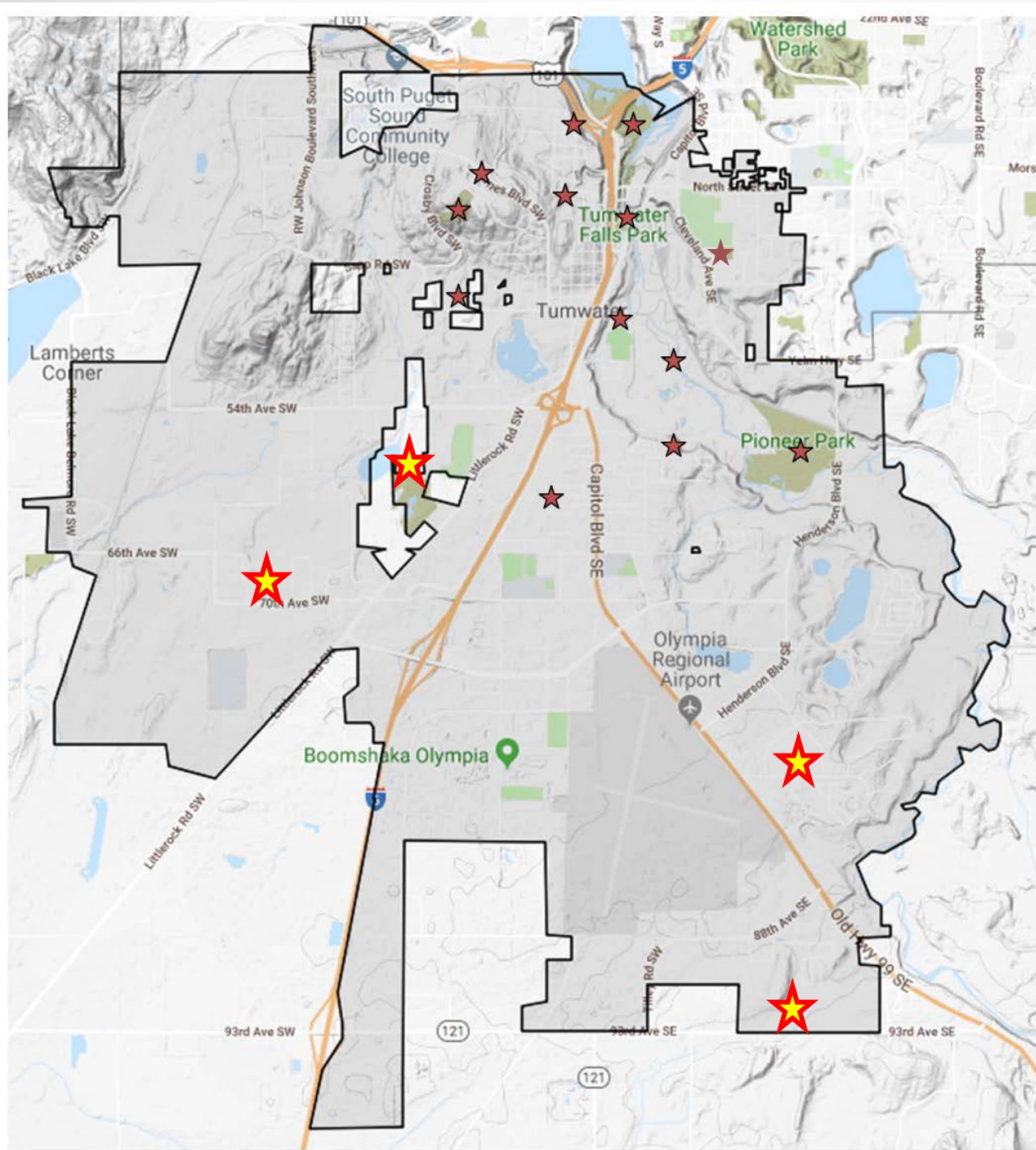
● Tumwater City Council

June 19, 2018 ●

What do we have now?



City Parks
have not
kept pace
with City
growth



★ Existing
Parks

★ New
Parks

Parks, Recreation & Open Space Plan

“Current park maintenance staffing and equipment is not adequate to sufficiently maintain the City’s existing inventory of parks”



- Reinvest in park facilities and infrastructure
- Deschutes Valley Trail and Neighborhood Trail Connections
- SW Neighborhood Park Completion
- Deschutes Watershed Center support
- Acquire land and develop Community, Neighborhood and Urban parks
- Develop a swimming facility
- Preserve Historic Resources
- Develop a new multiple-use indoor community center to replace the Old Town Center
- Improve infrastructure and event space at Tumwater Valley Golf Course
- Habitat protection and restoration

Parks, Recreation & Open Space Plan

“Develop high quality recreational programs, and services for all ages, income levels, skill and fitness levels, physical and mental abilities, and cultures that meet community needs”



- Expand sustainable recreational programs and activities
- Refine, expand and improve community events
- Evaluate and transform senior services
- Develop a recreation program that serves adult age residents within the City
- Expand community partnerships

New Parks

- Tumwater Hill Park Expansion – 25.5 acres
- Sapp Road Park Land – 12 acres
- Deschutes Way Property – $\frac{3}{4}$ acre
- Pioneer Park, Phase 2 and Phase 3
- Jim Brown Park
- Isabella Bush Park
- Deschutes Valley Park
- Barnes Blvd Trail Property – 6.6 Acres

Parks Maintenance Staff

½ FTE added since 1999



Manager



Supervisor



Lead



Grounds

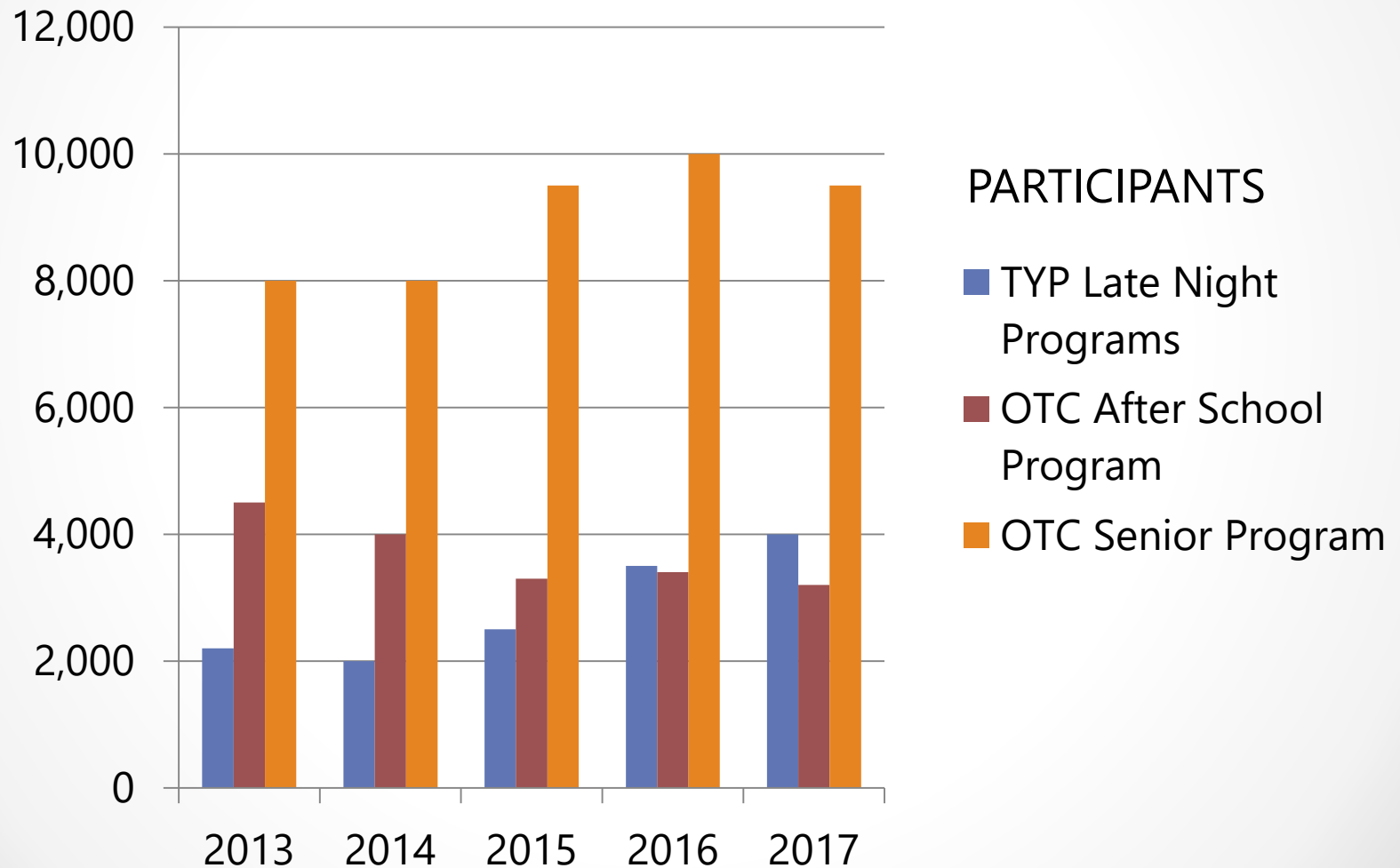


Grounds (1/2 FTE)

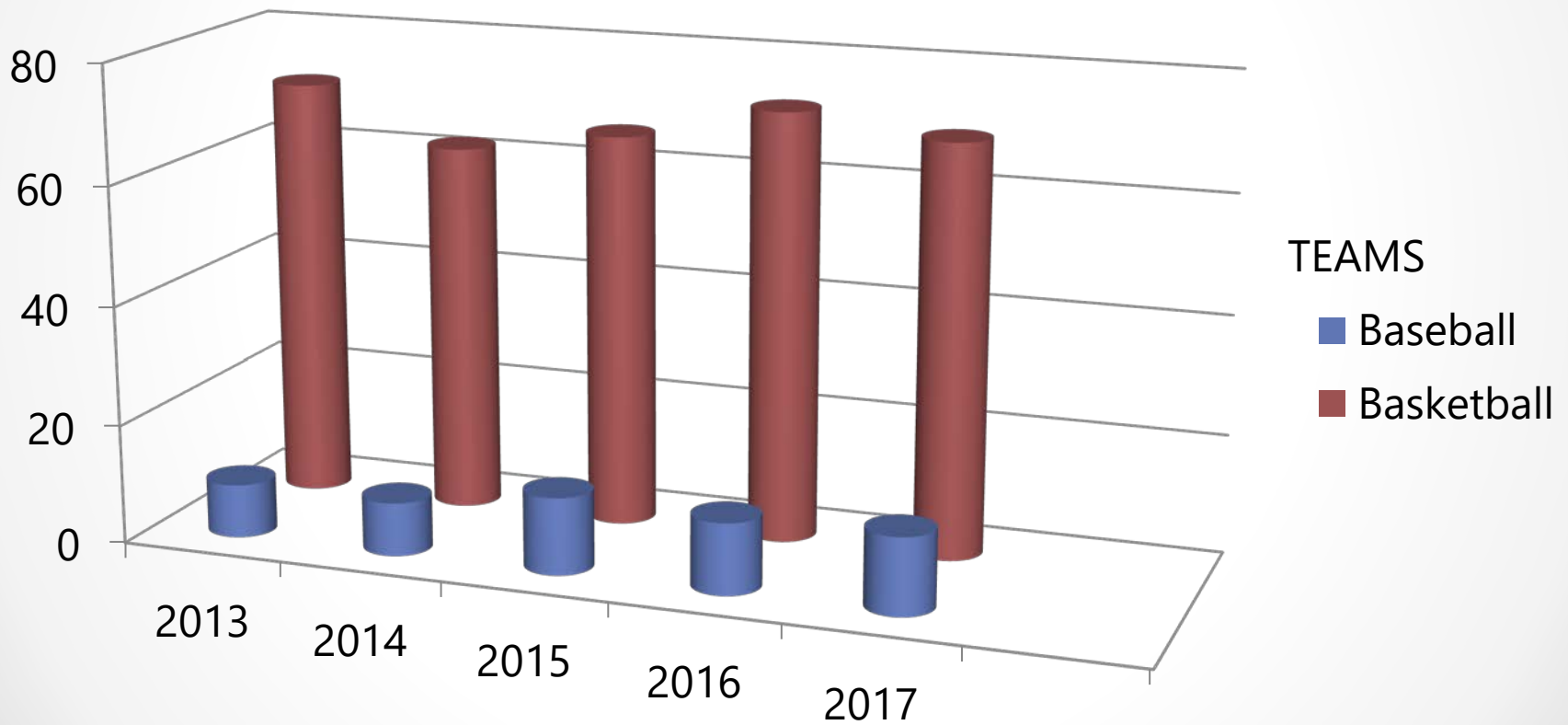


Seasonal/Hourly
2 – 4/ 30 hours/week

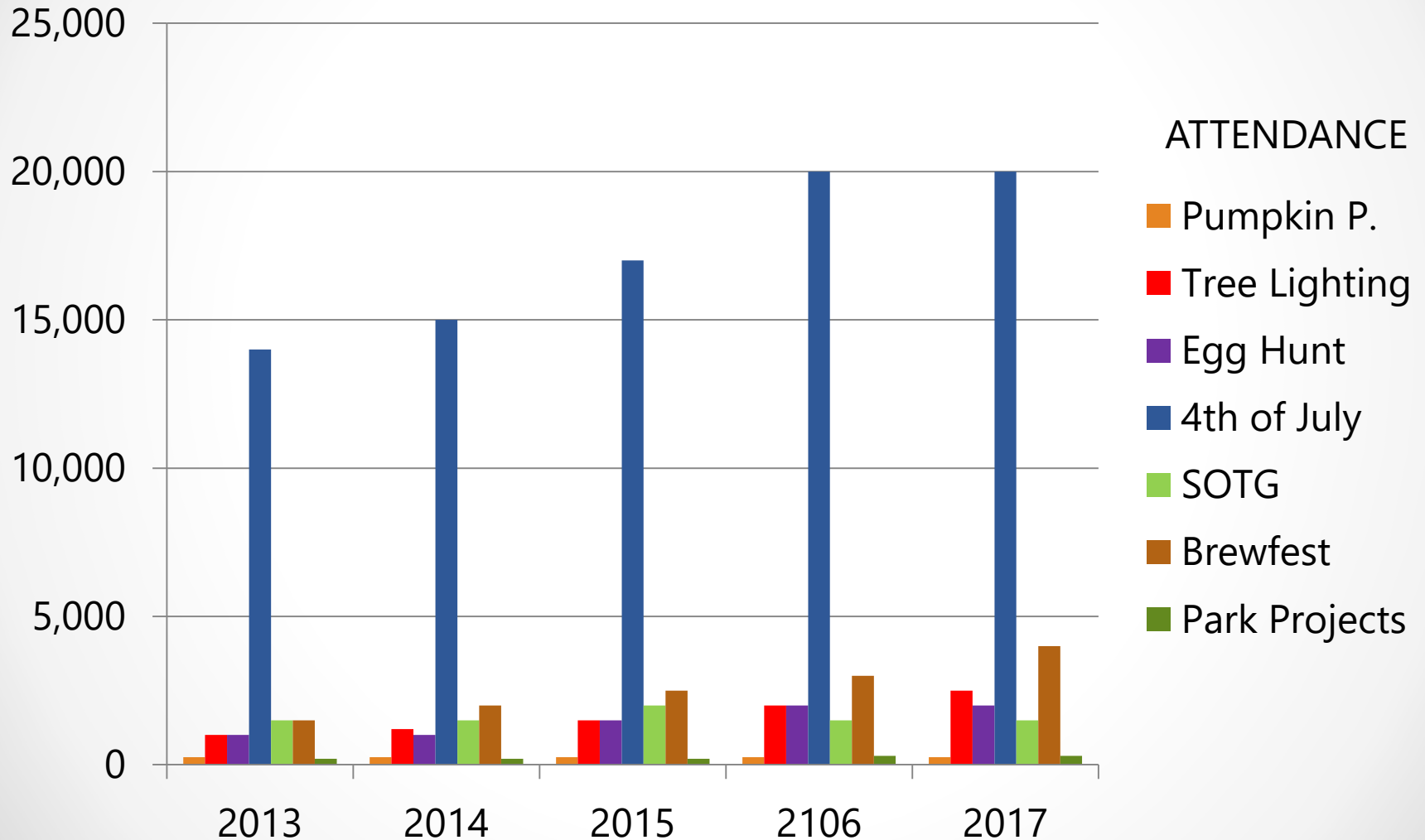
Youth & Senior Programs



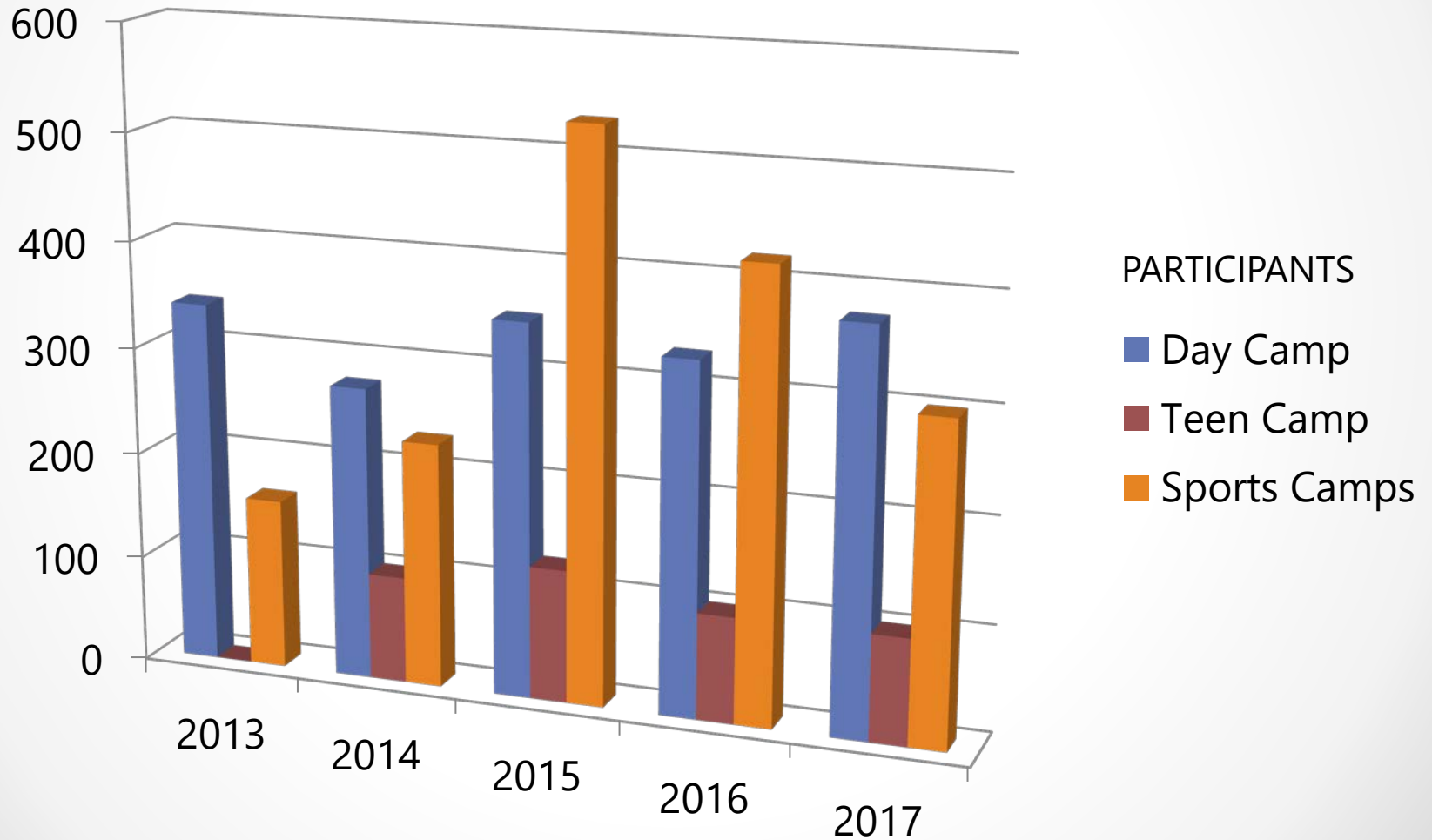
Sports Programs



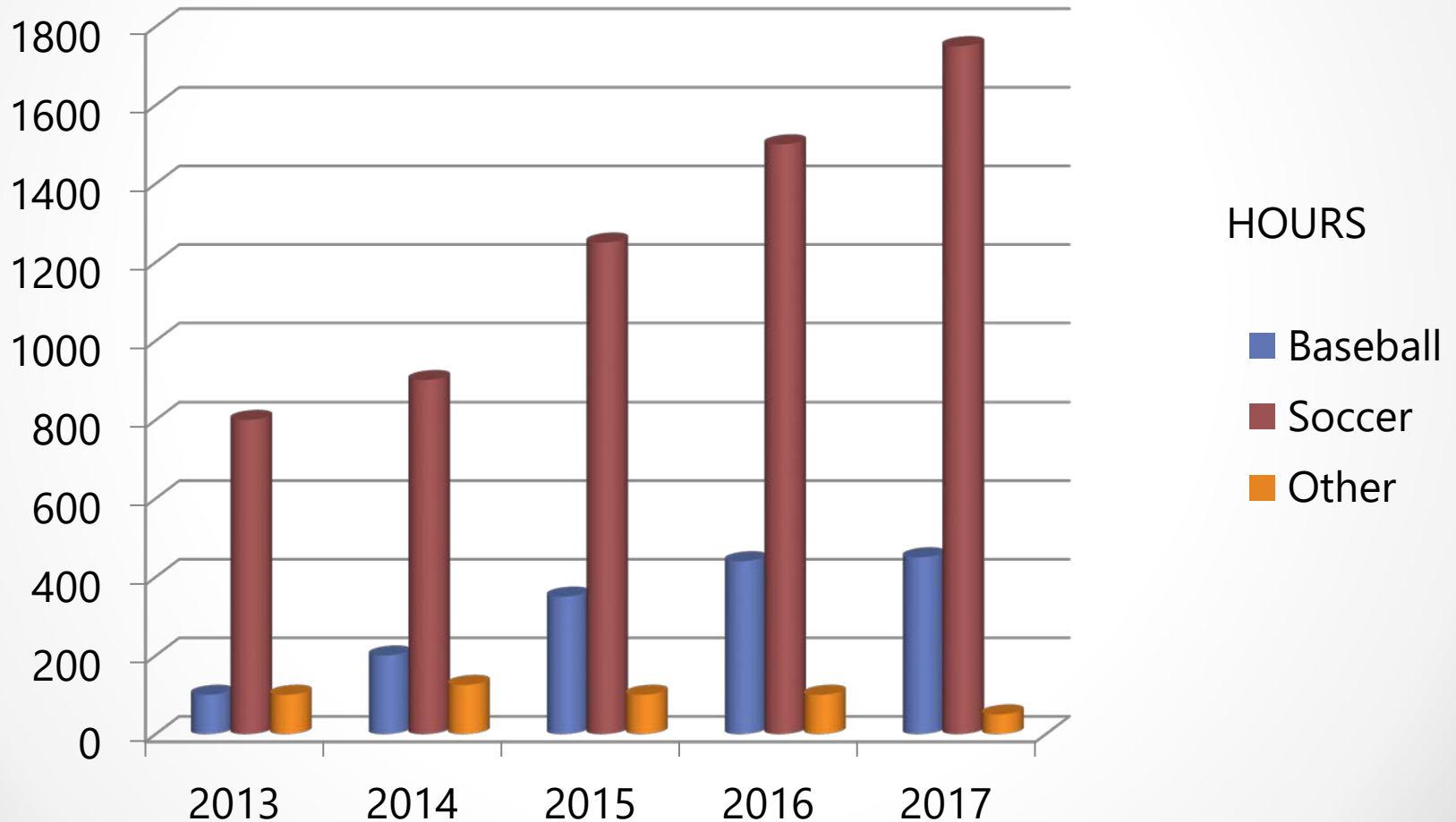
Special Events



Summer Camps



Field Allocations



Recreation Staffing

Same staffing level since 2001



Manager



Supervisor



OTC Cook



Coordinator



Coordinator

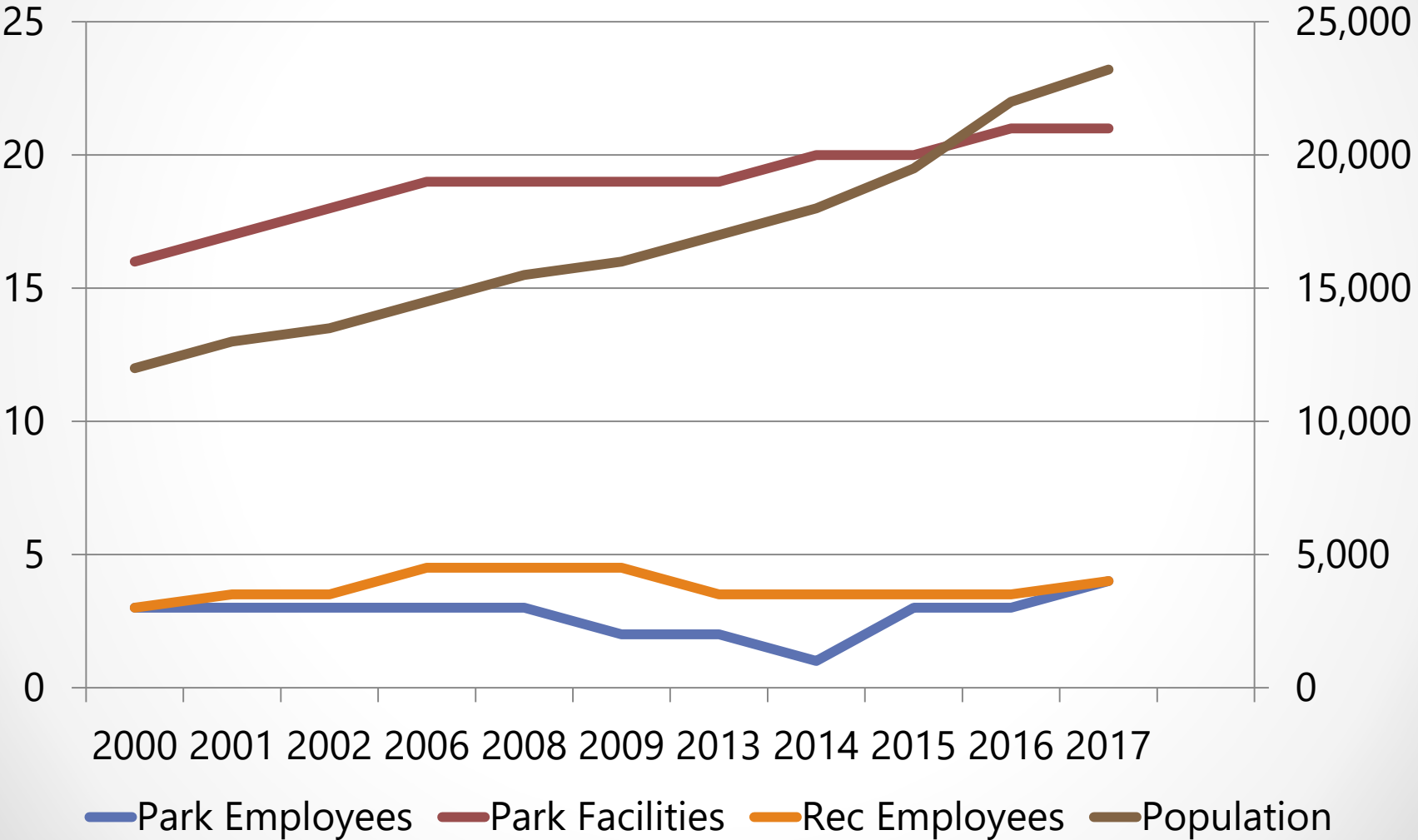


Hourly: 2 – 12 seasonal

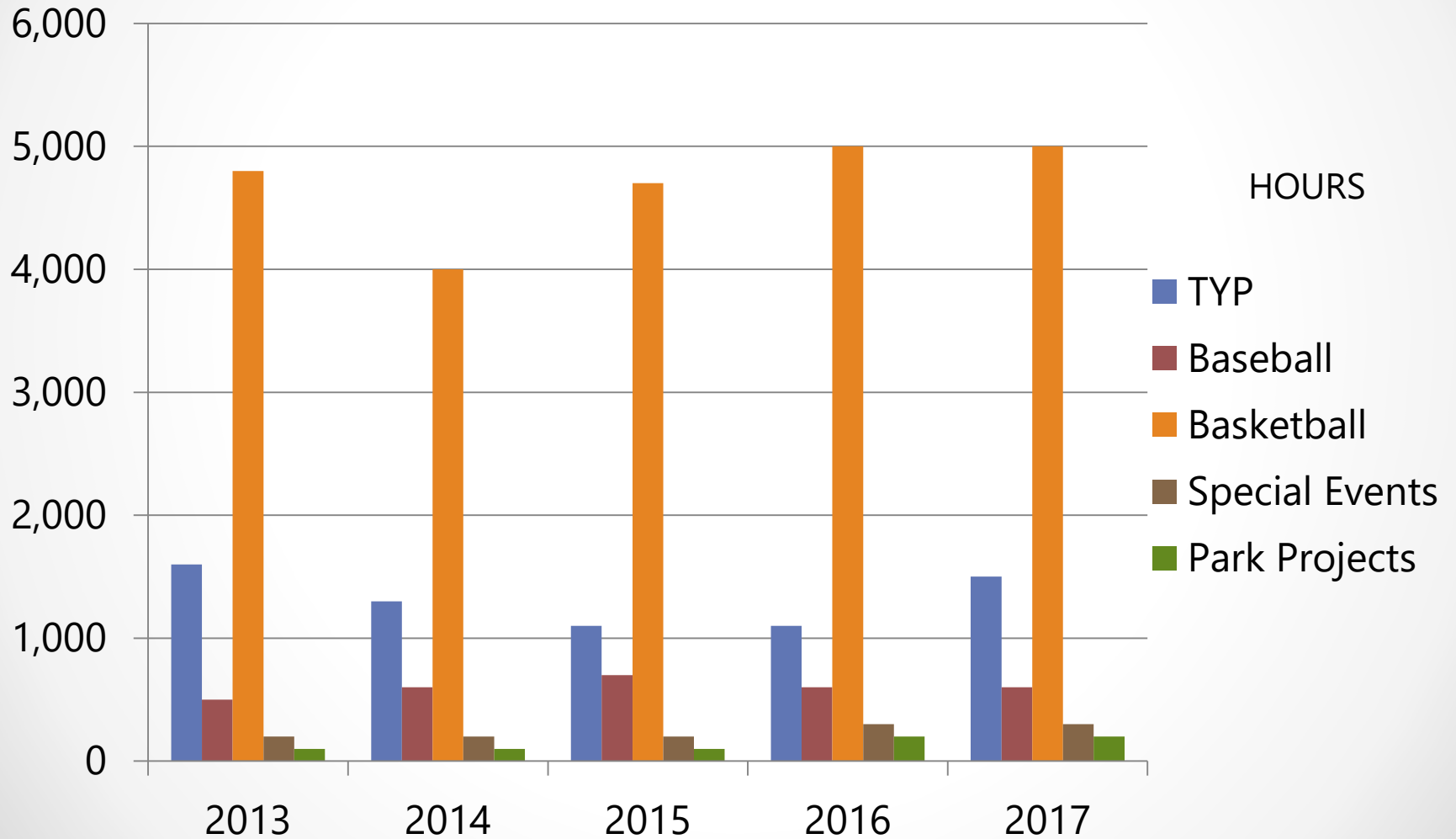


Volunteers

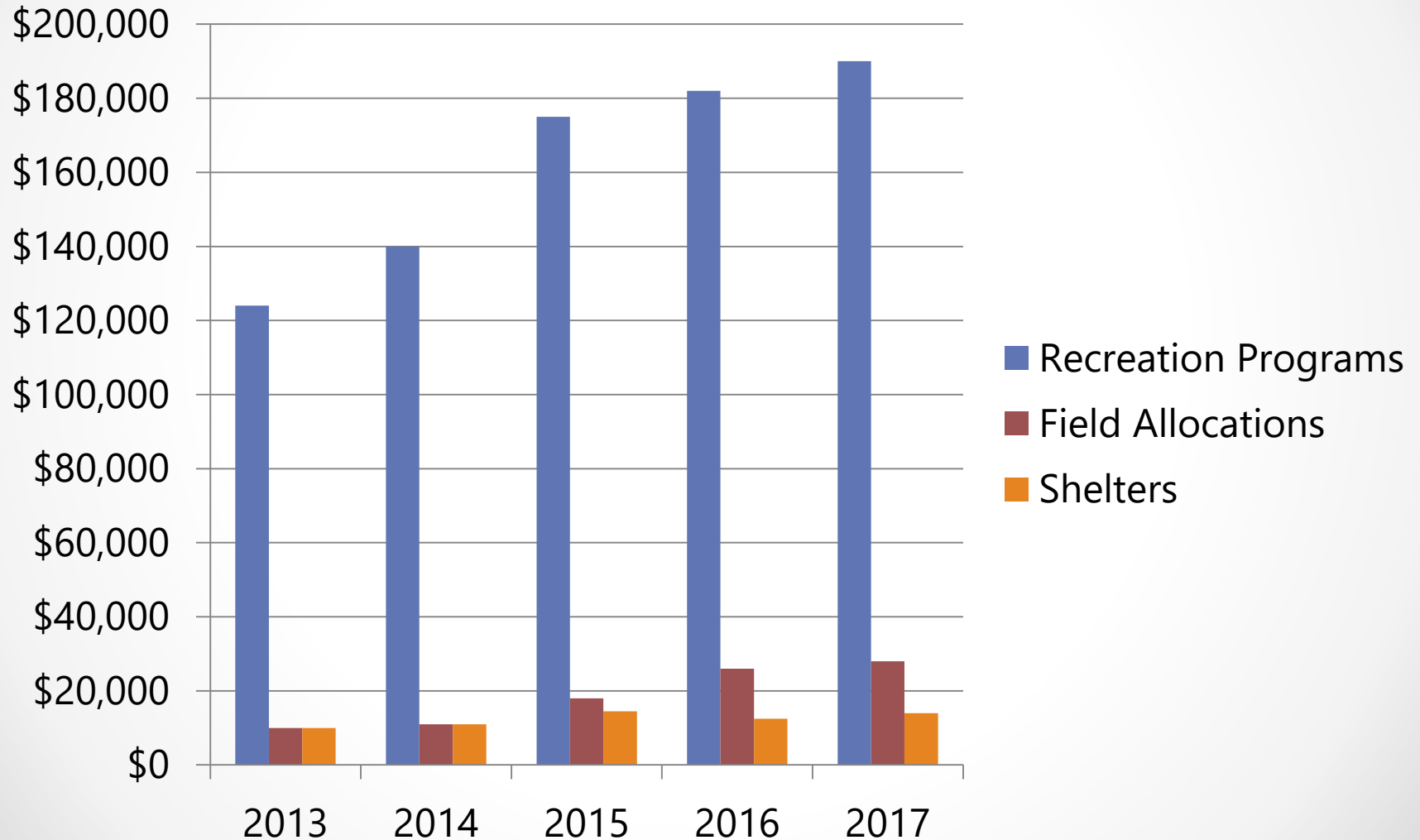
Employees, Parks and Population



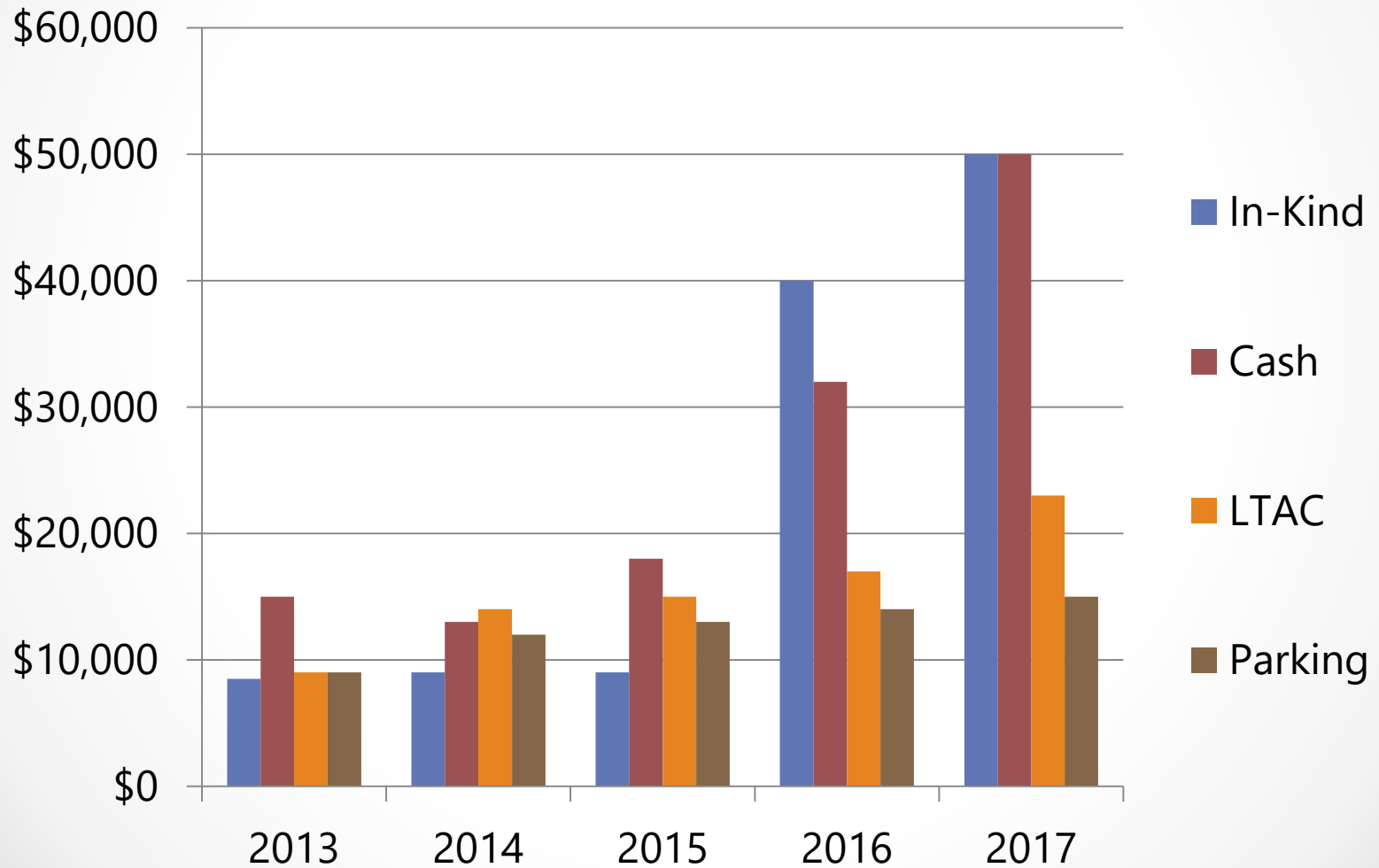
Volunteers Hours



Recreation Program Revenue



Sponsorships



6 Year Improvement Plan

Park Impact Fees – 2012- 2017

PROJECT	TOTAL	IMPACT FEE TRANSFER MEMO AMOUNTS					
	2012-2017	2017	2016	2015	2014	2013	2012
Isabella Bush/Linwood Park	266384	193832	72552				
Deschutes Valley Trail Segment A-1	31691	31691					
Tumwater Hill Park Trails	78922	35332	33565	10025			
Deschutes Valley Trail	358507	78130	46573	62938		124659	46207
Historical Park Playground Equipment	147379	147379					
Deschutes Valley Park	429024	80435	348589				
Tumwater Historic Park Trail	89472		81094	8378			
Tumwater Hill Neighborhood Park Extension	146299			10702	135597		
Pioneer Park Shelter	83365					83365	
Totals	1631043	566799	582373	92043	135597	208024	46207

Planning for the Future

2016 City Council Retreat

- No significant increase in recreation funding
- Parks development falling behind growth
- Updated Parks, Recreation and Open Space Plan goals

2016 City Council Strategic Priority

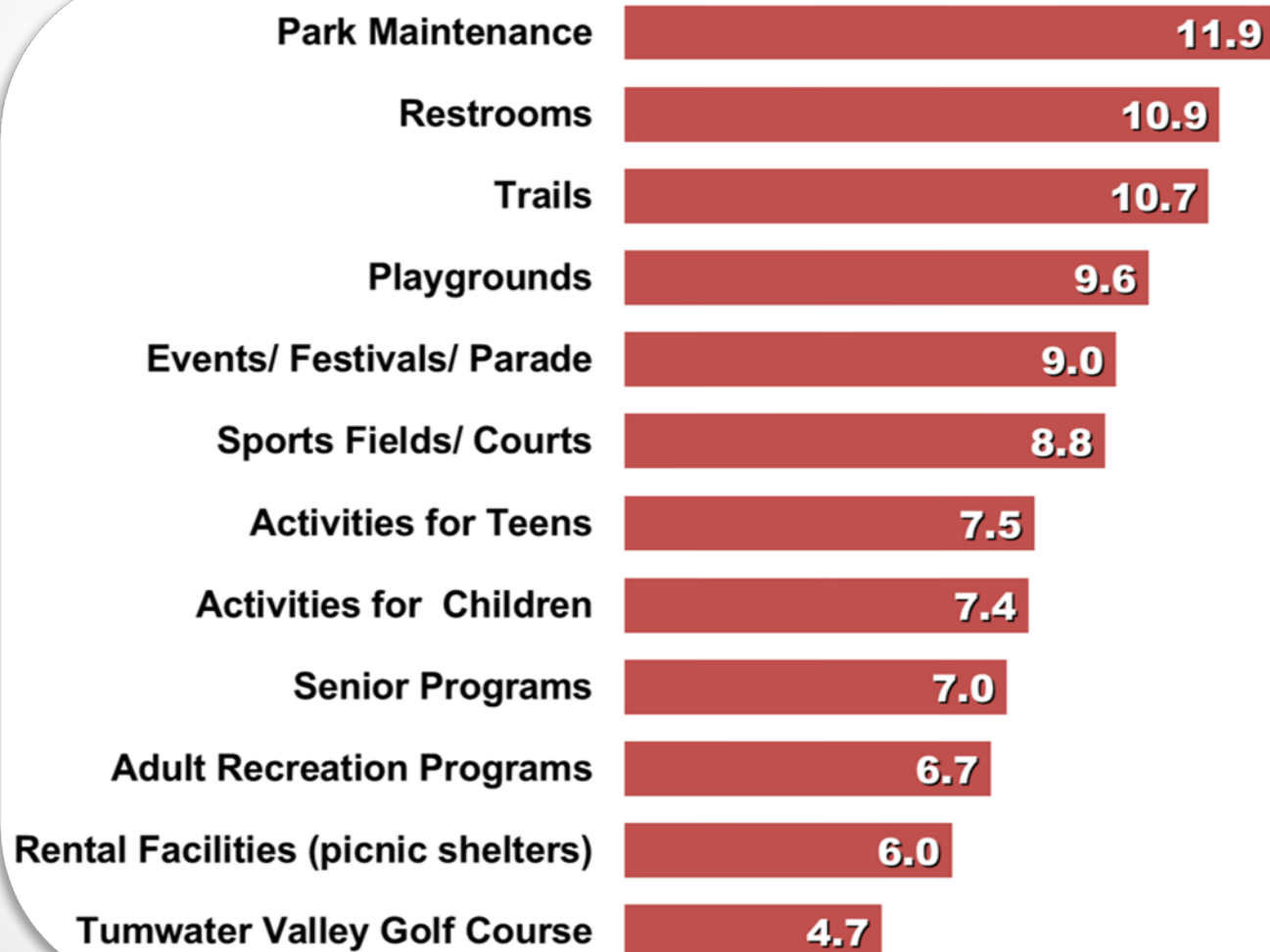
- Provide high quality municipal facilities and parks
- Creation of the Parks and Recreation Task Force

2017 Task Force

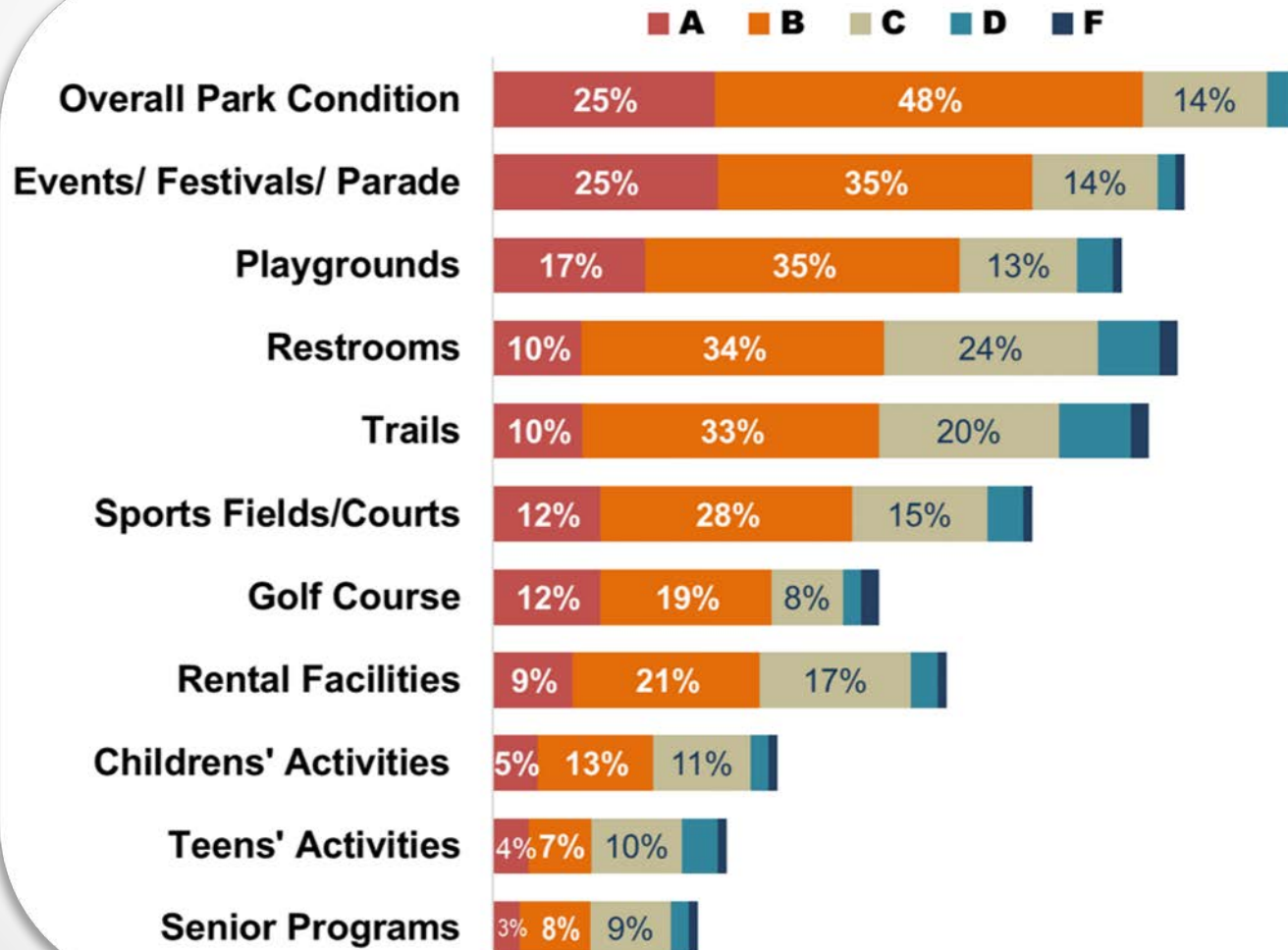
- Completion of community needs assessment survey
- Recommendations for parks, facilities, recreation and staffing

2017 Community Survey

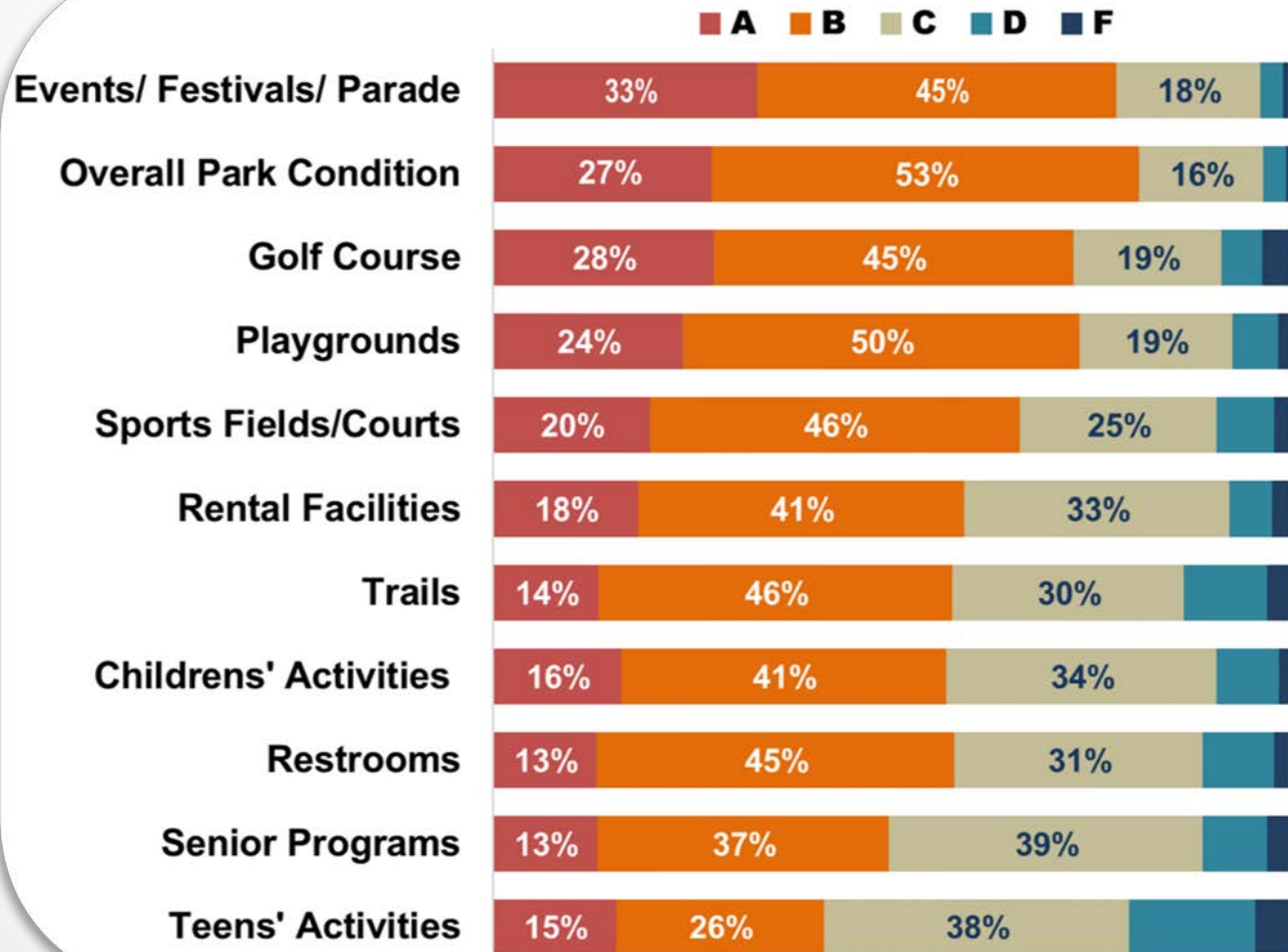
“Most Important” Functions & Programs



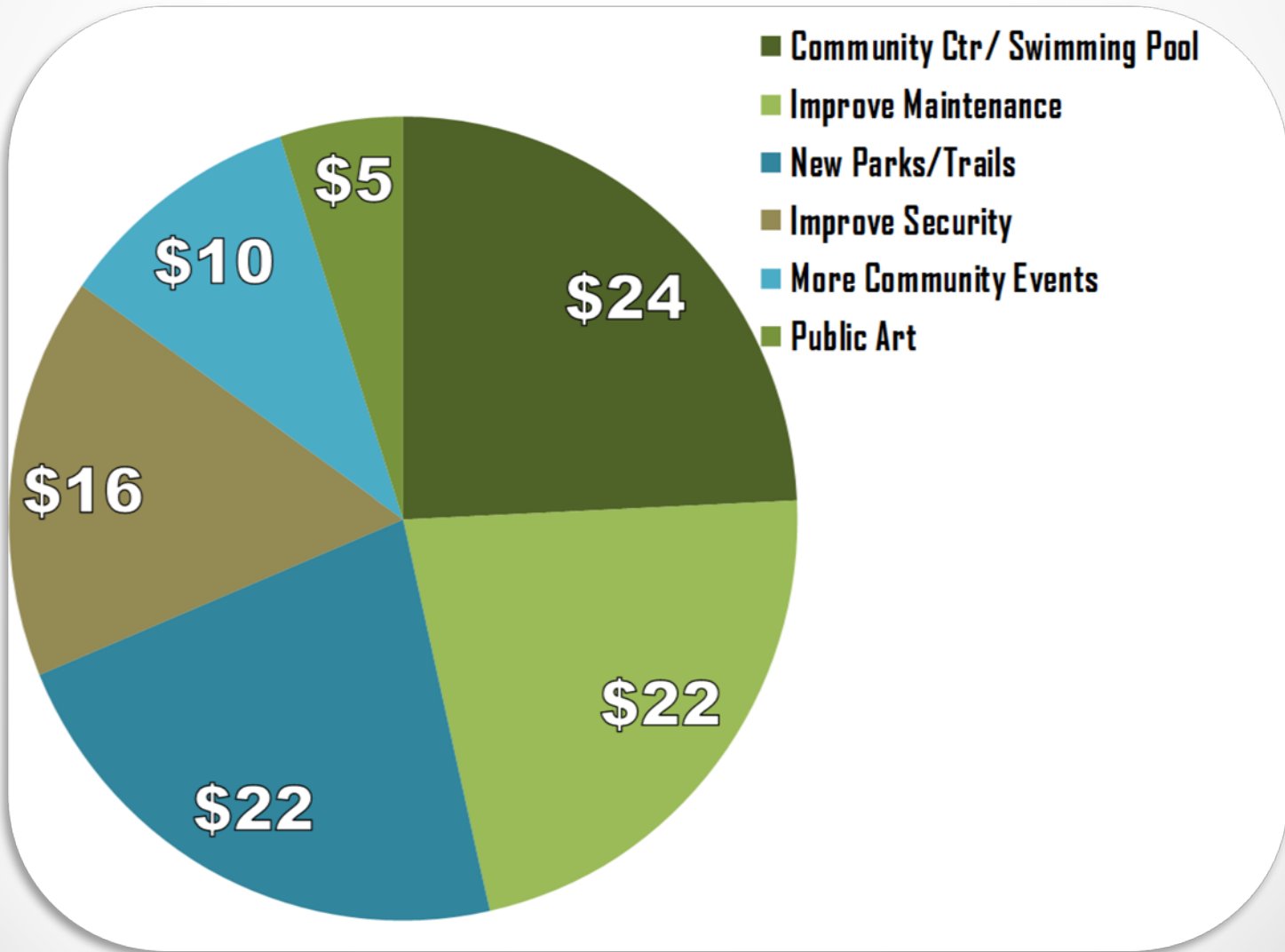
Grading the Department



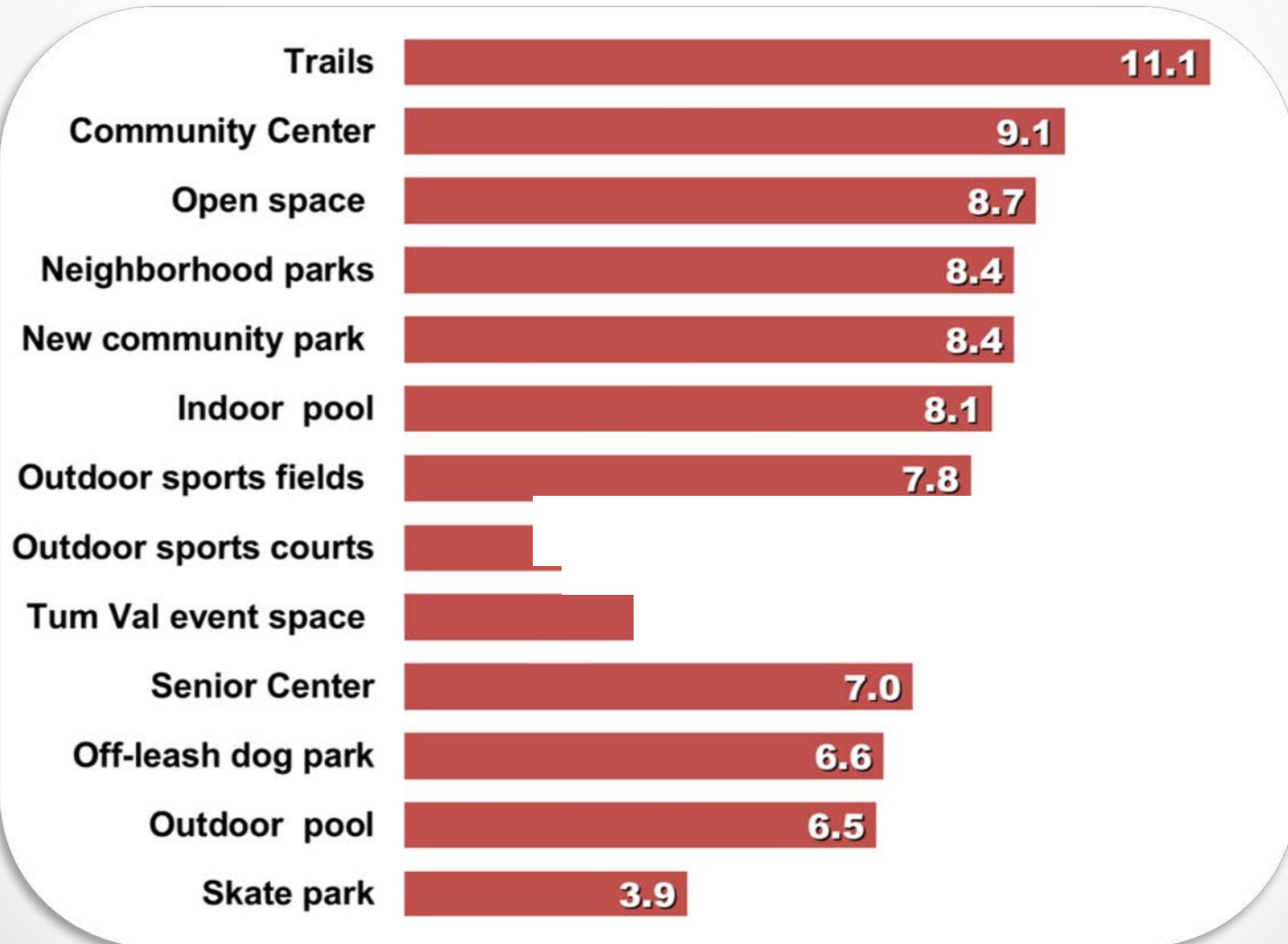
Grades by Those with an Opinion



Spending Priorities



Priorities for New Programs, Facilities



Task Force Options

- Continue on the path we are on
- Expand recreation offerings
- Improve existing parks facilities
- Expand parks, programs and facilities in size and diversity

State Law

A Metropolitan Park District may be created for the management, control, improvement, maintenance and acquisition of parks, parkways and recreational facilities.

What is a Metropolitan Park District?

- Same boundaries as the City of Tumwater
- Governed by the Mayor/City Council
- Funded by a property tax increase
- Approved by voters
- Does not expire
- Funds are dedicated to parks, recreation and related facilities
- Maximum levy rate of \$.75/\$1,000

Proposed Tumwater Metropolitan Park District

- November 6, 2018 public vote
- If successful, MPD begins in 2020
- Initial rate of \$.45/\$1,000 - 2020 to 2025
- 2026 rate increases to \$.75/\$1,000

- Initial revenue: \$1.5 million/year
- 2026 revenue: \$2.5 million/year
- 20 Year MPD Plan - \$55,000,000.

Creation of a Metropolitan Park District

- Address deferred Park maintenance
- 4 neighborhood Parks on existing property
- Acquisition of open space/natural areas
- Increase park maintenance staffing
- Increase recreation/program staffing
- Acquire land for a future community center
- Build a community center
- Provide matching funds for the Deschutes Valley Trail

Thank you!

For more information, contact:

Chuck Denney, Parks & Recreation Director
City of Tumwater
(360) 754-4160